

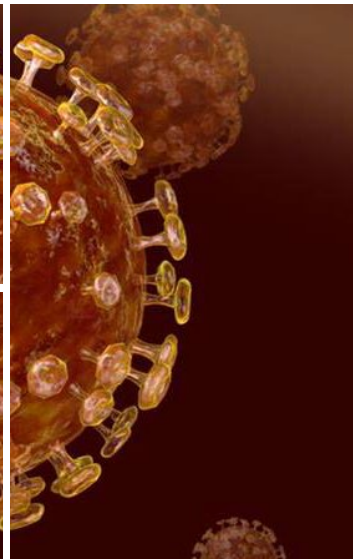
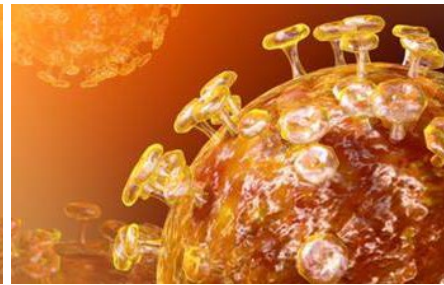
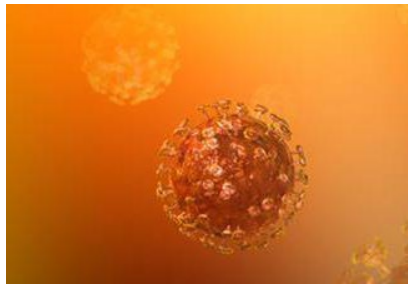


COVID-19 Webinar: Pure Talk

Situation Update and

How to Return to Operations in the New Normal

Thursday 8th of October 1.30PM CET



EXPERT SPEAKERS



Dr. Ahmed Abdel-Khalek
Head of Health,
HSE/Sustainability Function
ABB



Cedrick Moriggi
Global Head of Security and Resilience
LafargeHolcim



Dr. Philippe Guibert
Regional Medical Director
International SOS



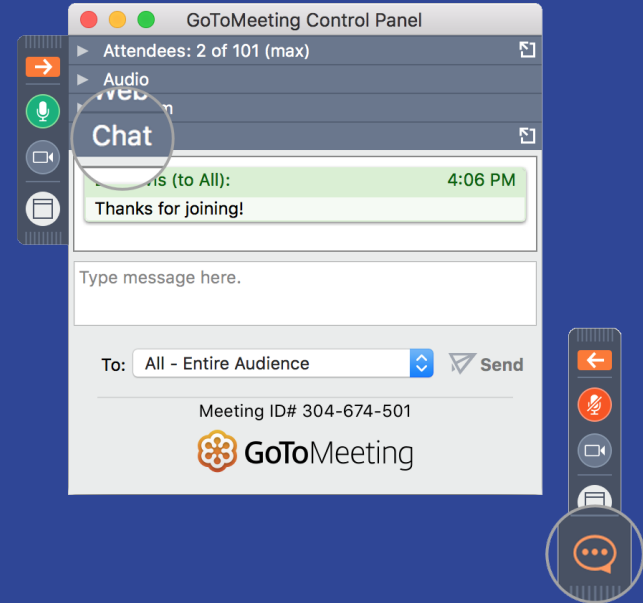
Gautier Porot
Security Director
International SOS

AGENDA

1. Introduction
2. Situational Update
3. Pure Talk: A Comparative Discussion
4. Live Q&A: Join the Talk!
5. Conclusions

HOUSE-KEEPING

- All attendees are in 'listen-only' mode
- To ask questions, please type them into the chat box on the right hand of the control panel
- Co-hosts can unmute when required during the discussion
- The webinar will be recorded and shared in the coming days

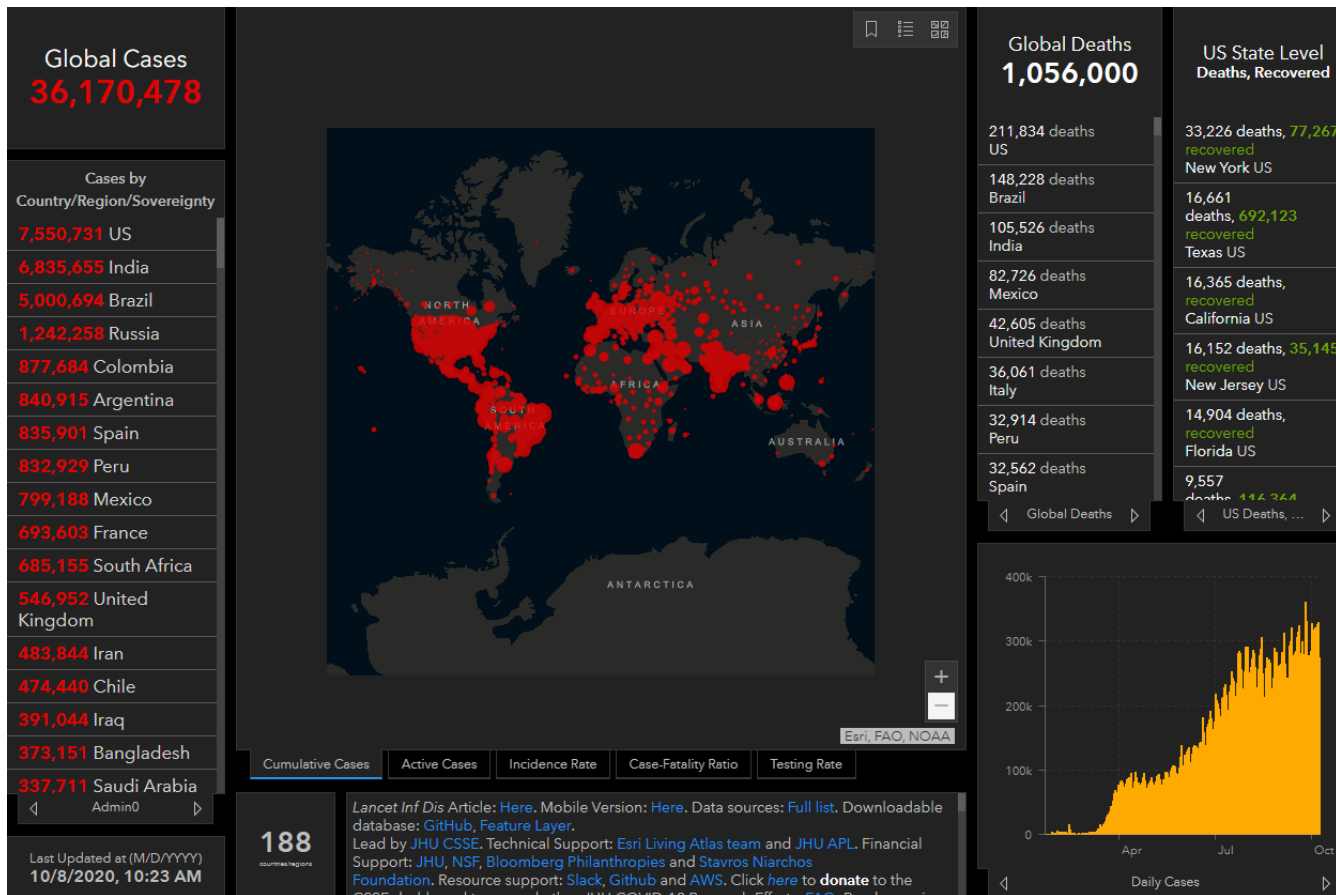


PANELISTS DISCLAIMER

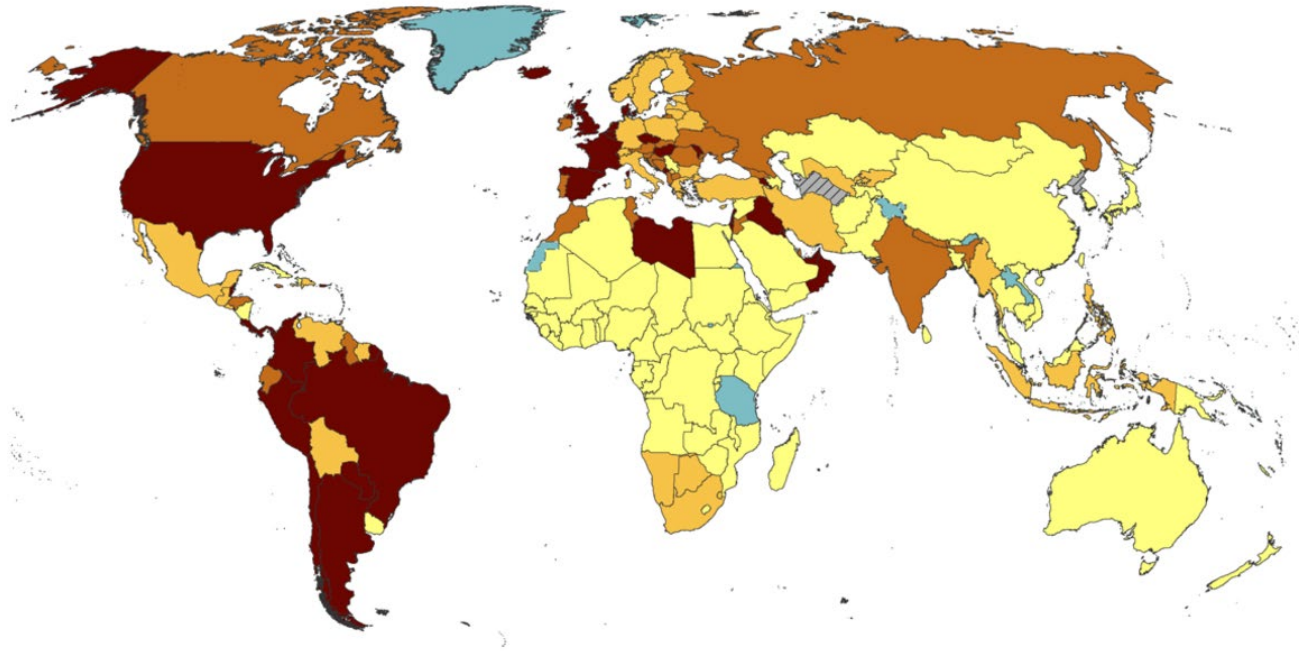
"The keynote speakers and participants speak for themselves as experts, and not on behalf of the company for which they work".

"They will share with us their understanding of their respective fields."

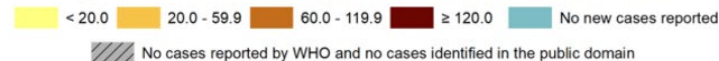
HEALTH TECHNICAL PREFACE



HEALTH TECHNICAL PREFACE



14-day COVID-19 case notification rate per 100 000, as of 05 of October, 2020



HEALTH TECHNICAL PREFACE

Data available to:	12/31/2019 10/7/2020	Selected Location	Total cases	Deaths
07 October 2020	<input type="radio"/> <input type="radio"/>	Switzerland	56,502	1,786

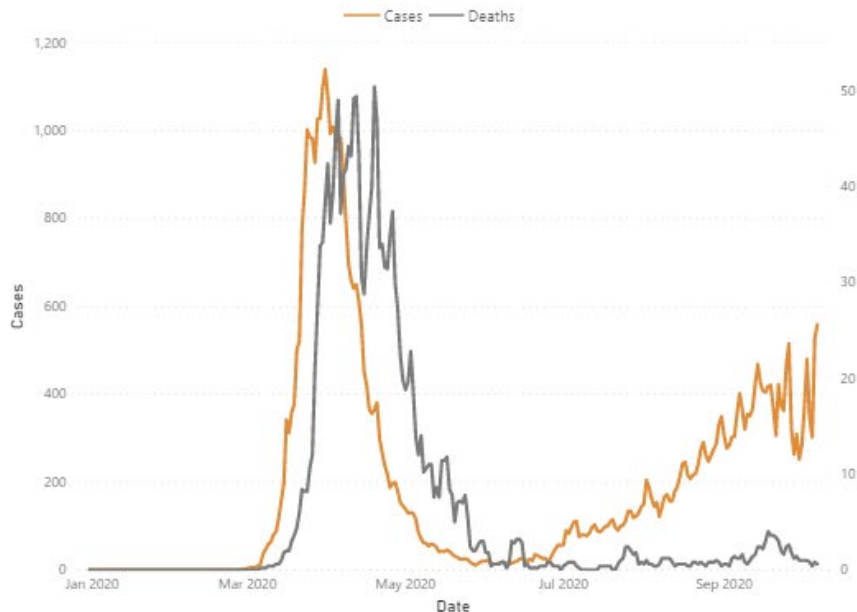
Data represented here is obtained from a publicly available [online repository](#) published by [OurWorldinData](#) and [ECDC](#). All analysis by International SOS is offered on the basis of a public good.

Index

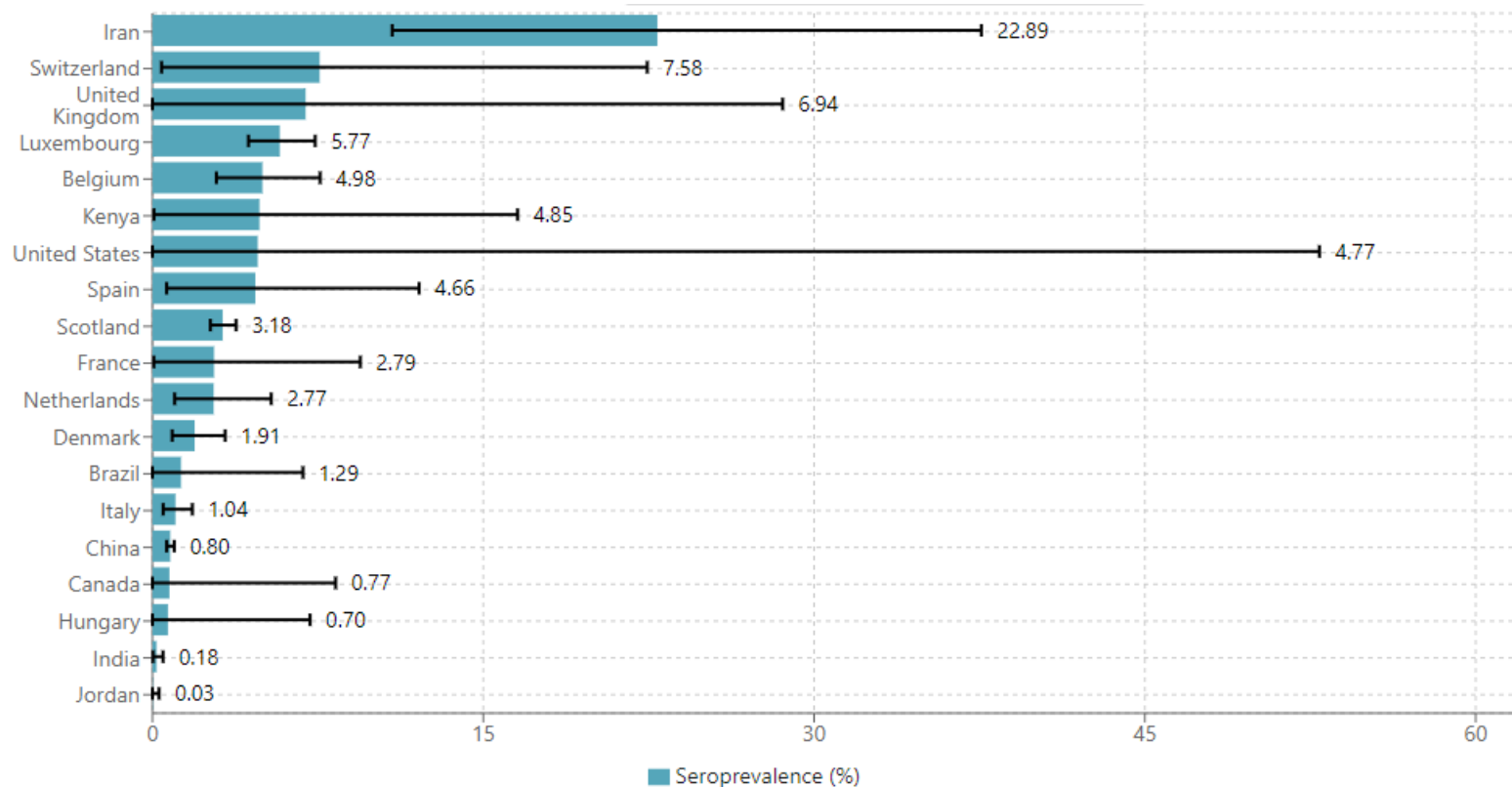
Click a **country** in the table below to filter the graphs to show only that location. **CTRL-click** to include multiple **countries**. Col headings can be clicked to sort data.

Country	population	Total cases	Total cases per million	Total deaths	Total deaths per million
United Arab Emirates	8,690,400	100,794	10,191.09	435	43.96
Sweden	10,099,270	96,145	9,520.00	5,883	582.51
Guatemala	17,915,567	94,870	5,295.40	3,310	184.76
Nepal	29,136,808	90,814	3,116.81	563	19.32
China	1,439,323,774	90,667	62.99	4,739	3.29
Czech Republic	10,708,962	90,022	8,406.22	794	74.14
Japan	126,476,458	86,543	684.26	1,605	12.71
Costa Rica	5,094,114	82,142	6,124.89	1,004	197.08
Belarus	9,449,321	81,090	8,581.57	868	91.83
Honduras	9,904,608	80,662	8,143.88	2,447	247.07
Portugal	10,196,707	80,312	7,876.27	2,032	199.26
Ethiopia	114,963,583	80,003	695.90	1,238	10.77
Venezuela	28,435,943	79,796	2,806.18	665	23.39
Bahrain	1,701,583	73,476	43,186.45	262	153.97
Nigeria	206,139,587	59,583	289.04	1,113	5.41
Uzbekistan	33,469,199	38,343	1,773.06	489	14.61
Singapore	5,850,343	57,830	9,884.90	27	4.62
Moldova	4,033,963	57,732	14,311.48	1,389	344.32
Switzerland	8,654,618	56,502	6,528.54	1,786	206.38
Palestine	5,101,416	53,429	10,473.36	412	80.75
Armenia	2,963,234	53,083	17,913.87	990	334.07
Algeria	43,851,043	52,399	1,194.93	1,773	40.43
Puerto Rico	2,860,840	51,737	18,084.55	696	243.30
Austria	9,006,400	30,435	5,599.90	840	93.26
Kyrgyzstan	6,524,191	47,799	7,326.43	1,066	163.39

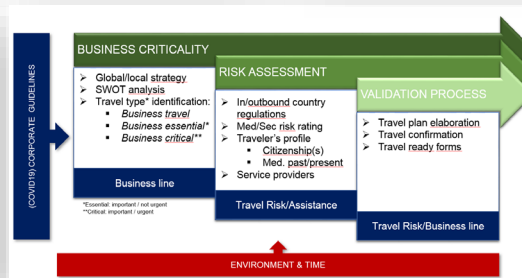
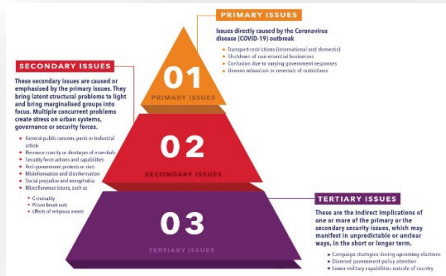
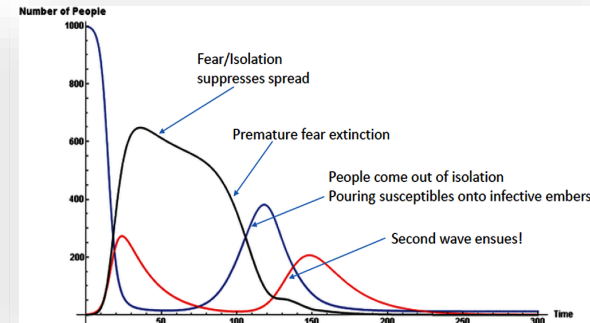
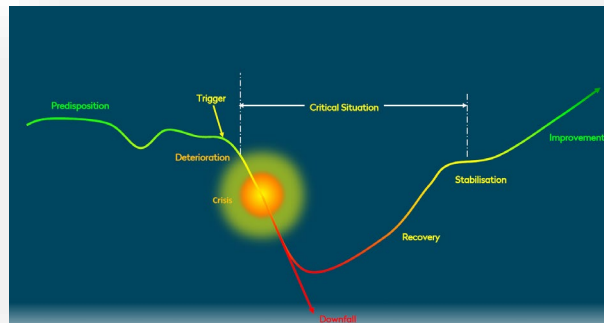
Daily reported cases and deaths - 5 day moving averages - Note: different axes



HEALTH TECHNICAL PREFACE



RESILIENCE TECHNICAL PREFACE



SPOTLIGHT: ABB



Dr. Ahmed Abdel-Khalek
Head of Health,
HSE/Sustainability Function
ABB

SPOTLIGHT: LAFARGEHOLCIM



Cedrick Moriggi
Global Head of Security and Resilience
LafargeHolcim

PURE TALK



HEALTH

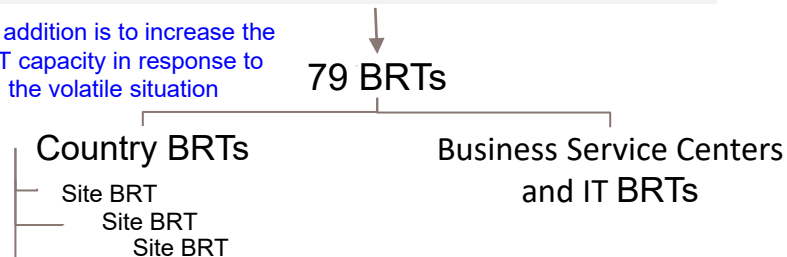
LH Strategic Approach – 3 Streams – reporting to LH CEO

CASH

COST

15 Functions: HR, H&S, Governmental affairs, RMX, Aggregate, CIP, Security & Resilience, Legal, IT, Digital, Procurement, Communication, Environment, Communities and Audit and Assurance.

This addition is to increase the BRT capacity in response to the volatile situation



The Role of the tCBRT

- Thinking ahead, anticipating what comes next 3 to 9 months ahead
- Implementing & measuring pandemic Covid-19 plan through TARP methodology and reporting performance
- Supporting all Country BRT via interactive sessions such as “Hear me out, Help me out” sessions - twice a week
- Support to Countries in critical response situations
- Sharing country practices within all BRTs
- Answering countries CEO, BRT & staff questions
- Maintaining intranet Covid-19 webpage
- Coordinate measures to **OPERATE COVID FREE**

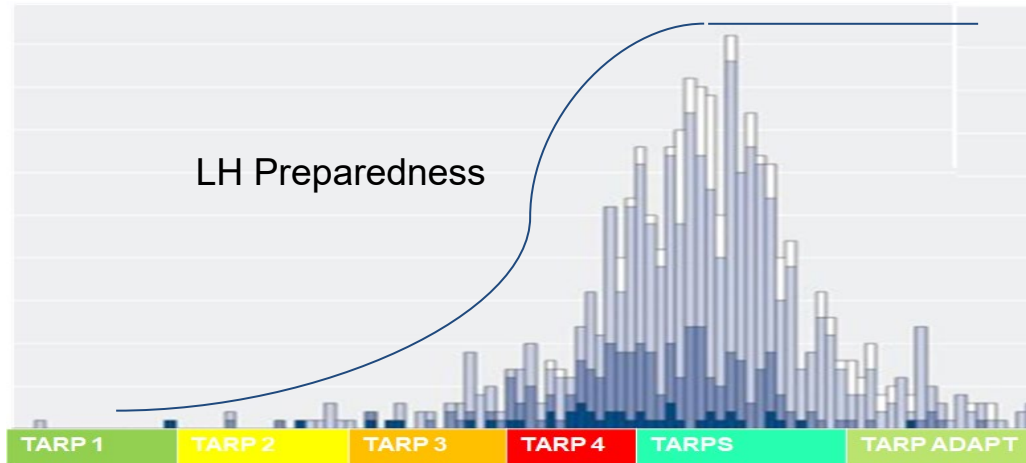
- tCBRTs define program and metrics to measure and report performance to ExCo via LH Dashboard and SitRep once a week (3 until June)
- CCEOs to lead implementation in countries

tCBRT Tactical Activities include:

- Business Resilience and Leadership guidance and support
- Health & Safety support (via H&S team)
- Staff productivity, moral, wellbeing, and emergency support
- Operational readiness and continuity
- Supply chain resilience of PPE
- External benchmarking and expert gathering
- Sharing lessons learnt and best practices
- Hosting good practice “community” in regions
- Hosting advisory workshops on specific topics
- Travel monitoring and resolution of issues
- External and Internal Stakeholder relationships

LH: Unique Global TARP approach

The epidemiological curve on which the LH “TARP” system was predicated is materialising in every country. Every country is at a different stage in the “curve”.



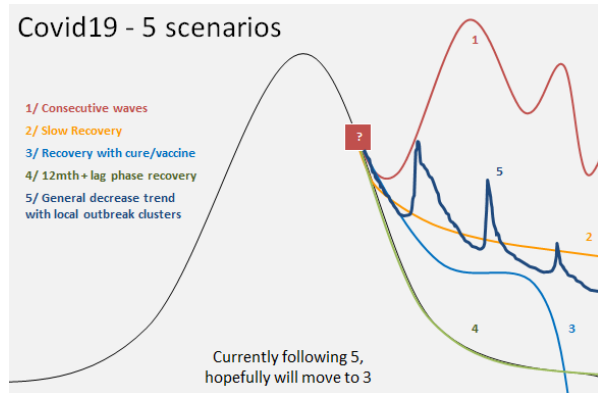
TARP	Situation in country
1	Disease mainly in China
2	Index cases in country
3	Clusters of cases
4	Approaching peak
STABILISATION	Peak period
ADAPT	Post-peak period

- The TARP system has been successfully employed to ensure that every LH country has a common approach to preparation and response.
- The TARP system is based on a series of coordinated actions under People, Health and Safety, BRT/leadership, Operations and Stakeholder categories.
- TARP 1-4 and S have been implemented by all countries. TARP ADAPT, a risk-based gradual return to a new operating new normal has is relevant for those countries in the post peak period. All European countries have moved into TARP ADAPT
- Alignment and data on each LH country reported weekly.

LH: 5 Scenarios - LH What next

We cannot predict the shape or duration of the curve, BUT WE CAN Plan against Scenarios

TARP ADAPT is a flexible approach that provides an operating system whatever the next reality, and the number of next waves.



We need to expect:

- Clusterise closure per cities, province, regions
- Due to mass testing, and human behaviour, we will have more and more cases (mostly asymptomatics)
- More and more scrutiny from Union, media, on what we are doing to protect our workers
- Less international travel (Int. Assignee and Functions)
- More and more fatigues management and mental health issue

© 2020 AEA International Holdings Pte. Ltd.

All rights reserved. Unauthorized copy or distribution is prohibited.

Health BRT will be focusing on:

Spearhead **“our sites as sanctuaries”** philosophy with a **layered control model** to focus on inside - out/ outside-in resilience.

Using data to drive **continuous improvement**

Providing countries and sites with the **subject matter expertise** and materials they need to maintain standards and respond effectively

Hosting **shared lessons learnt** to leverage global strength

Planning for the direct and **indirect consequences** of Covid-19 into the long term

Country BRT will be focusing on:

Ensuring all sites **maintain the highest standards** of hygiene and operational readiness

Sharing good practice and learning from others

Exercising and training for every eventuality

Staying in “BRT mode” until the situation returns to a stable new normal

Site BRT will be focusing on:

Ensuring our sites are viewed as **“a sanctuary from infection”**

Implementing new best practice in line with **changing national guidance**

Remaining ready to **respond correctly** to all suspected or new cases

LH: Tactical approach - Operating Covid Free

Keeping our sites Covid Free

Our Commitment

Protect the health and wellbeing of our people

Operate Covid Free Sites

Minimise disruption to our business operations

5 Simple Rules

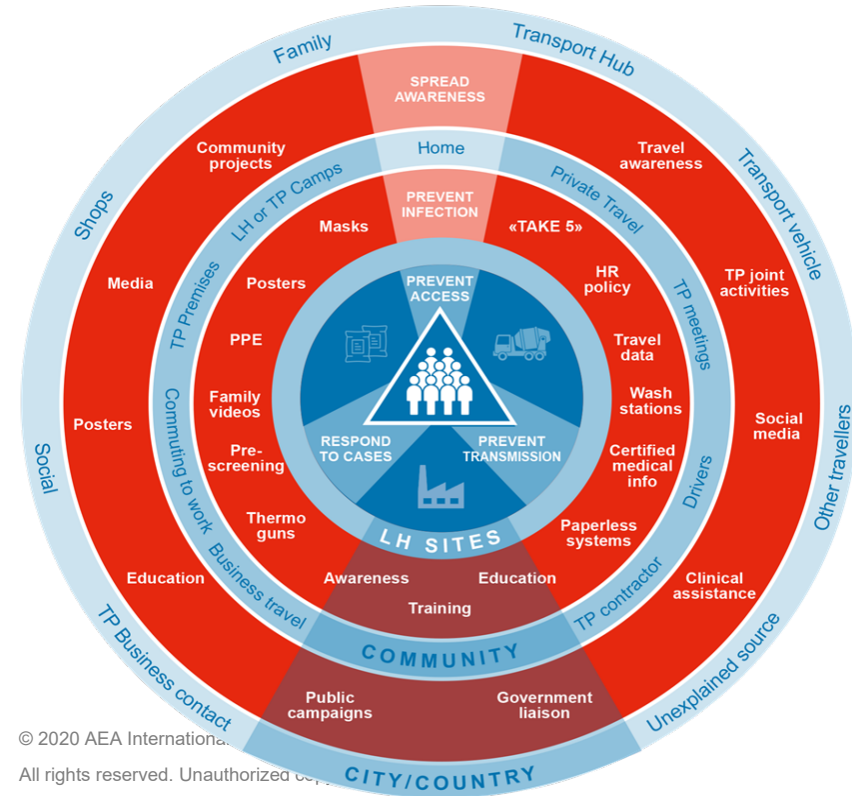
Comply with national guidance and LH Requirements

Implement and enforce hygiene rules

Prevent sick people from entering the site

Understand what to do when people are sick

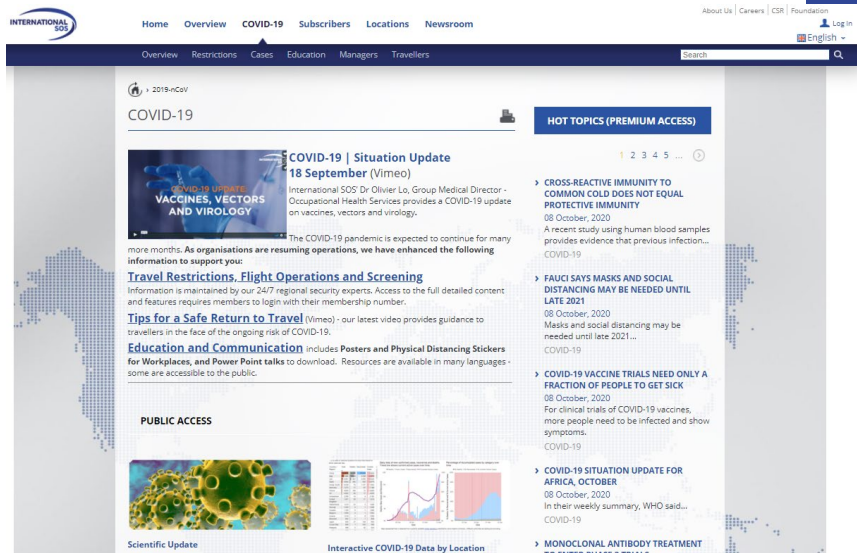
Work with clients, partners and communities to fight Covid



Overcoming complacency and Drifting Risk Tolerance

The road to recover will be long and difficult - but one day we'll look back on what we did and be proud. To help us get there, you must be able to answer these questions at all times:

1. Do you know what to do if someone is taken ill either at work or outside work?
2. What do you do if you suspect a person caught Covid on site?
3. Do you know how to safely shut down the site?
4. Do you know what to do if the area (city/region) is placed into lockdown?



The screenshot shows the International SOS website's COVID-19 hub. The top navigation bar includes links for Home, Overview, COVID-19, Subscribers, Locations, and Newsroom. A search bar is located on the right. The main content area is titled 'COVID-19' and features a 'HOT TOPICS (PREMIUM ACCESS)' section on the right. The left side contains a 'PUBLIC ACCESS' section with various resources.

COVID-19 | Situation Update
18 September (Vimeo)
 International SOS' Dr. Olivier Lo, Group Medical Director - Occupational Health Services provides a COVID-19 update on vaccines, vectors and virology.

The COVID-19 pandemic is expected to continue for many more months. As organisations are resuming operations, we have enhanced the following information to support you:

Travel Restrictions, Flight Operations and Screening
 Information is maintained by our 24/7 regional security experts. Access to the full detailed content and features requires members to login with their membership number.

Tips for a Safe Return to Travel (Vimeo) - our latest video provides guidance to travellers in the face of the ongoing risk of COVID-19.

Education and Communication includes **Posters and Physical Distancing Stickers for Workplaces, and Power Point talks** to download. Resources are available in many languages - some are accessible to the public.

PUBLIC ACCESS

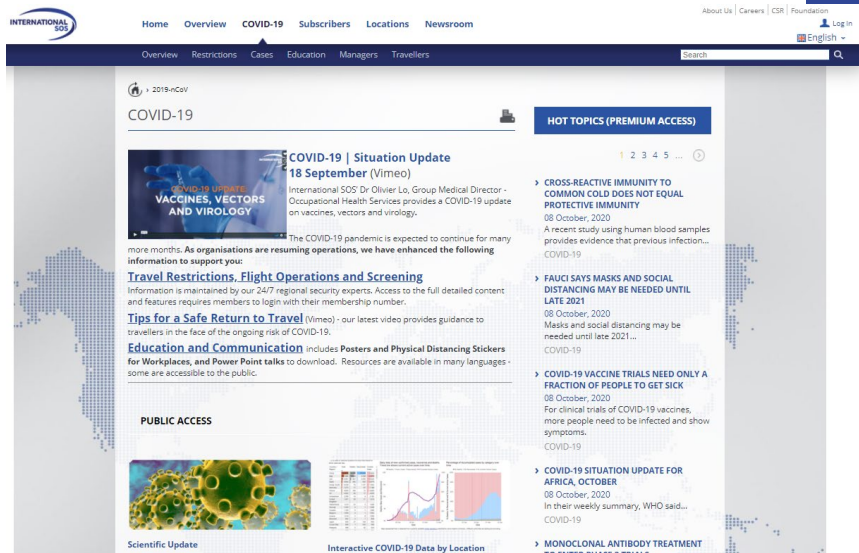
Scientific Update
 A video titled 'COVID-19: VACCINES, VECTORS AND VIROLOGY' showing a 3D model of a virus particle.

Interactive COVID-19 Data by Location
 A series of charts showing COVID-19 data by location, including a world map and a line graph of cases over time.

HOT TOPICS (PREMIUM ACCESS)

- CROSS-REACTIVE IMMUNITY TO COMMON COLD DOES NOT EQUAL PROTECTIVE IMMUNITY**
 08 October, 2020
 A recent study using human blood samples provides evidence that previous infection...
 COVID-19
- FAUCI SAYS MASKS AND SOCIAL DISTANCING MAY BE NEEDED UNTIL LATE 2021**
 08 October, 2020
 Masks and social distancing may be needed until late 2021...
 COVID-19
- COVID-19 VACCINE TRIALS NEED ONLY A FRACTION OF PEOPLE TO GET SICK**
 08 October, 2020
 For clinical trials of COVID-19 vaccines, more people need to be infected and show symptoms.
 COVID-19
- COVID-19 SITUATION UPDATE FOR AFRICA, OCTOBER**
 08 October, 2020
 In their weekly summary, WHO said...
 COVID-19
- MONOCLONAL ANTIBODY TREATMENT TRIALS ENTER PHASE 3 TRIALS**

Live Q&A OPEN NOW



The screenshot shows the International SOS website's COVID-19 hub. The navigation bar includes links for Home, Overview, COVID-19, Subscribers, Locations, and Newsroom. The main content area is titled 'COVID-19' and features a 'HOT TOPICS (PREMIUM ACCESS)' section. This section lists several key updates and resources, including a video update from Dr. Olivier Lo, information on cross-reactive immunity, and updates on vaccine trials and monoclonal antibody treatments. A 'PUBLIC ACCESS' section at the bottom highlights scientific updates and interactive data by location.

COVID-19 | Situation Update
18 September (Vimeo)
 International SOS' Dr Olivier Lo, Group Medical Director - Occupational Health Services provides a COVID-19 update on vaccines, vectors and virology.

The COVID-19 pandemic is expected to continue for many more months. As organisations are resuming operations, we have enhanced the following information to support you:

Travel Restrictions, Flight Operations and Screening
 Information is maintained by our 24/7 regional security experts. Access to the full detailed content and features requires members to login with their membership number.

Tips for a Safe Return to Travel (Vimeo) - our latest video provides guidance to travellers in the face of the ongoing risk of COVID-19.

Education and Communication includes **Posters and Physical Distancing Stickers for Workplaces**, and **Power Point talks** to download. Resources are available in many languages - some are accessible to the public.

PUBLIC ACCESS

Scientific Update

Interactive COVID-19 Data by Location

HOT TOPICS (PREMIUM ACCESS)

1 2 3 4 5 ...

- CROSS-REACTIVE IMMUNITY TO COMMON COLD DOES NOT EQUAL PROTECTIVE IMMUNITY**
 08 October, 2020
 A recent study using human blood samples provides evidence that previous infection...
 COVID-19
- FAUCI SAYS MASKS AND SOCIAL DISTANCING MAY BE NEEDED UNTIL LATE 2021**
 08 October, 2020
 Masks and social distancing may be needed until late 2021...
 COVID-19
- COVID-19 VACCINE TRIALS NEED ONLY A FRACTION OF PEOPLE TO GET SICK**
 08 October, 2020
 For clinical trials of COVID-19 vaccines, more people need to be infected and show symptoms.
 COVID-19
- COVID-19 SITUATION UPDATE FOR AFRICA, OCTOBER**
 08 October, 2020
 In their weekly summary, WHO said...
 COVID-19
- MONOCLONAL ANTIBODY TREATMENT TRIALS ENTER PHASE 3 TRIALS**

CONCLUSIONS

1.

**VISIT OUR INTERNATIONAL SOS PANDEMIC WEBSITE
FOR ALL UP TO DATE INFORMATION**

› Pandemic.internationalsos.com/2019-ncov

2.

**DOWNLOAD INTERNATIONAL SOS APP FOR TRAVEL ALERTS AND ADVISORIES**

3.

**SIGN UP FOR EMAIL TRAVEL ALERTS**

› Log in to your [International SOS Member Portal](#) and register for email subscriptions using your membership ID.

4.

**TELEHEALTH SERVICES**

› Virtual access to our Assistance Centre medical teams and local teleconsultation network providers, to minimize exposure risks while delivering integrated, end to end care.

5.

**REMOTE COUNSELING SERVICES AVAILABLE GLOBALLY 24/7**

› [Emotional Support services](#) can be delivered by a certified counselor via phone or online video-chat, even to those under quarantine.

6.

**[DOWNLOAD COVID-19 POCKET GUIDE](#)**

7.

**[DOWNLOAD COVID-19 - WHAT YOU NEED TO KNOW FACT SHEET](#)**

THANK YOU FOR ATTENDING

For any further enquiries, please contact:
switzerland@internationalsos.com

[HTTPS://PANDEMIC.INTERNATIONALSOS.COM/2019-NCOV](https://pandemic.internationalsos.com/2019-ncov)