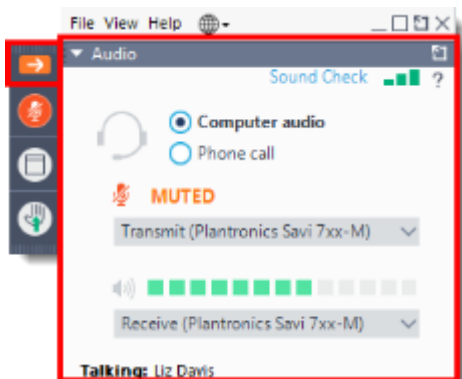


RETURNING TO TRAVEL IN A COVID-19 WORLD

June 11, 2020



GOTOWEBINAR HOUSEKEEPING: ATTENDEE PARTICIPATION



Your Participation

Open and close your control panel

Join audio:

- Choose **Mic & Speakers** to use VoIP
- Choose **Telephone** and dial using the information provided

Submit your questions using the **questions** panel, we will answer as time allows.

Note: Today's presentation is being recorded and will be provided via email.

SPEAKERS



DR. MARK FISCHER
Regional Medical Director
International SOS



JEREMY PROUT
Regional Security Manager
International SOS



MARK A. SANNA CPP CLSD
Managing Partner
NorthPoint Security

AGENDA

- Return to Work Benchmarking
- Return to Travel Process
- Where Travel Stands Today
- How to Travel Safely
- Quarantine Considerations
- How International SOS Can Help



WHO WE SPOKE TO

Surveyed 1,000 business decision makers* to ask how prepared they felt their organisations were in their return to workplace and/or operations.

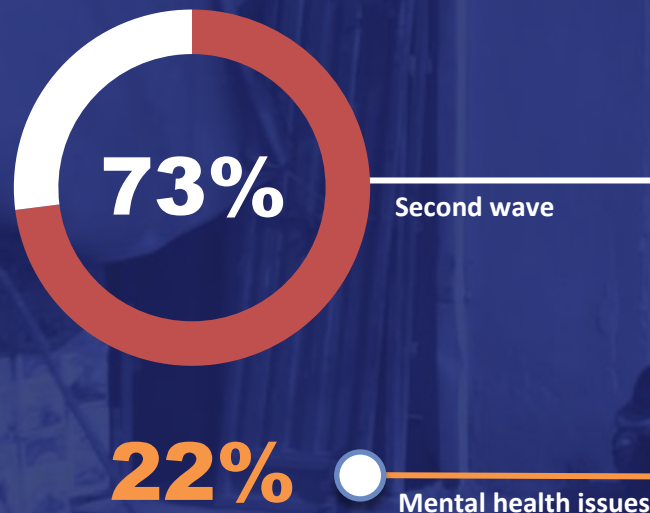
*those responsible for ensuring the health, security and wellbeing of their workforce.



GLOBAL RETURN TO WORK BENCHMARK TO SUPPORT YOUR DECISION MAKING.

2020
& Beyond

THE BIGGEST DISRUPTORS IN FUTURE



73% believe a second wave of the pandemic will be the biggest impact to business continuity in future.

More than a fifth believe mental health issues will disrupt their business.

TOP FIVE ACTIONS BEING TAKEN BY ORGANIZATIONS TO ENSURE A SAFE RETURN TO WORK



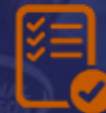
1 Updates to business continuity plans & procedures



2 On-the-ground support



3 COVID-19 compliance monitoring tools



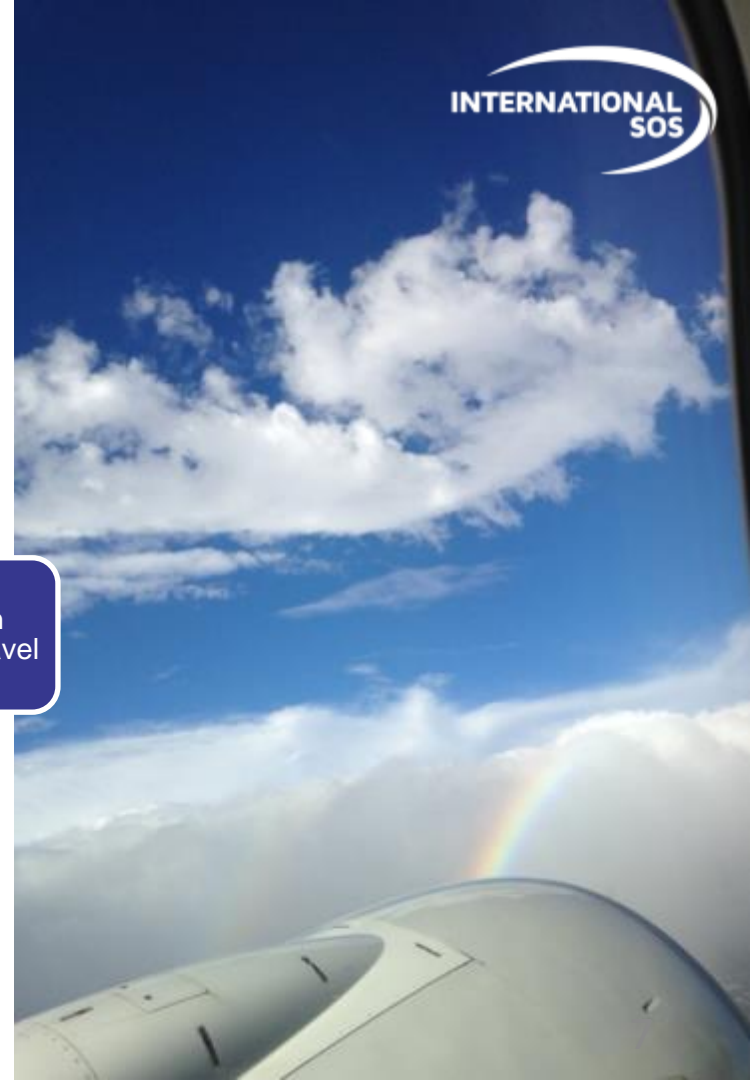
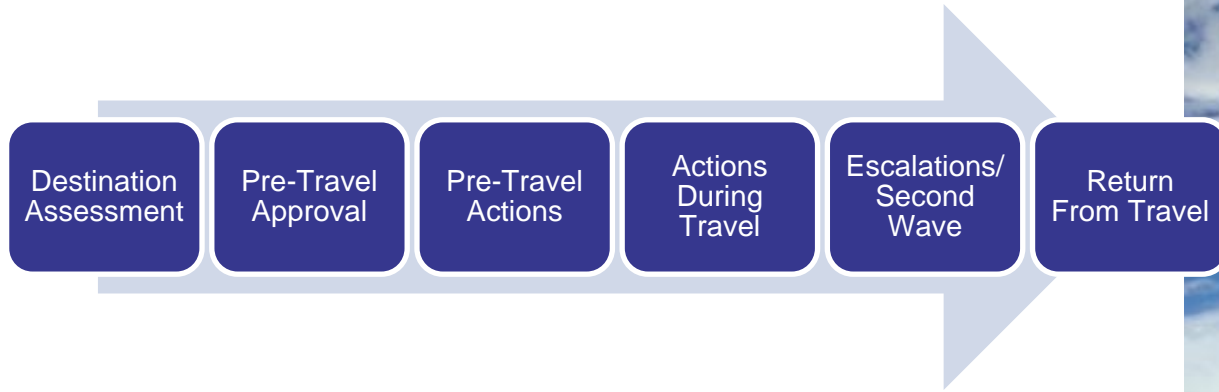
4 Fit-for-work health screening



5 Mental health support



RETURN TO TRAVEL STRATEGIC FRAMEWORK



WHERE TRAVEL STANDS TODAY

- Restrictions
- Easing of lockdowns
- Quarantine Approaches
- Travel Industry changes
- Second Wave concerns



APAC



EUROPE



GLOBAL IMPACTS- CURRENT STATE

LATAM



MENA



INDUSTRY PERSPECTIVE



MARK A. SANNA CPP CLSD

Managing Partner
NorthPoint Security

1. As we start the re-opening process, what can we expect from the hospitality industry, specifically hotels?

2. Are there risks outside of COVID-19 that you think need to be brought into greater light?

3. What message do have for organizations that are looking to resume domestic and international travel?

MEDICAL CONSIDERATIONS & ADVICE

RETURNING TO OPERATIONS



TIMING

Govt orders
Risk Less?
Wave Over?



FITNESS

Vulnerable
Recovered
Immune?



JOB

Essential
Isolated
Public
Hospital



MITIGATIONS/INTERVENTIONS

Essential
Isolated
Public
Hospital

CONSIDERATIONS & ADVICE

COUNTRY CONSIDERATIONS

- Government restrictions
- Medical risk and COVID-19 risk
- Status of local medical facilities due to COVID-19
- Nearest centers for appropriate medical care willing to accept
- Are there restrictions to enter/exit country?



CONSIDERATIONS & ADVICE

PLANNING YOUR TRIP

- Strategic travel planning
- Confirm insurance coverage
- Leisure component?
- Educate the traveler
- Access Teleconsultation?
- Risk Stratify medical risk
- Intelligence



CONSIDERATIONS & ADVICE

PERSONAL HEALTH

- Pre-deployment health screen
- Up-to-date vaccinations
- Testing
- Adequate supply of medications
- Travel clearance from physician
- Understanding best practice of NPI (non-pharmaceutical Interventions)

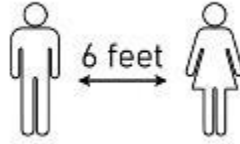


CONSIDERATIONS & ADVICE

DURING YOUR TRIP



TYPE OF CONTACT



LOCAL SOCIAL
DISTANCING CULTURE



SOCIAL ACTIVITIES



MENTAL HEALTH
COUNSELING

RESPOND TOOLS TO ASSIST



PANDEMIC SITE



ENTERPRISE HEALTH SECURITY CENTER



MEDICAL & SECURITY ALERTING



CONSULTING





WHAT COMES NEXT



THANK YOU FOR ATTENDING

Webinar recording and
materials will be emailed
within the next few hours.

internationalsos.com

