



HOW TO ENSURE A SAFE RETURN TO THE WORKPLACE IN AFRICA

**A holistic approach to safeguarding
the health and safety of your people**

AGENDA



COVID-19 situation update for Africa

Organizational Challenges

Medical considerations

Security considerations

How we can help

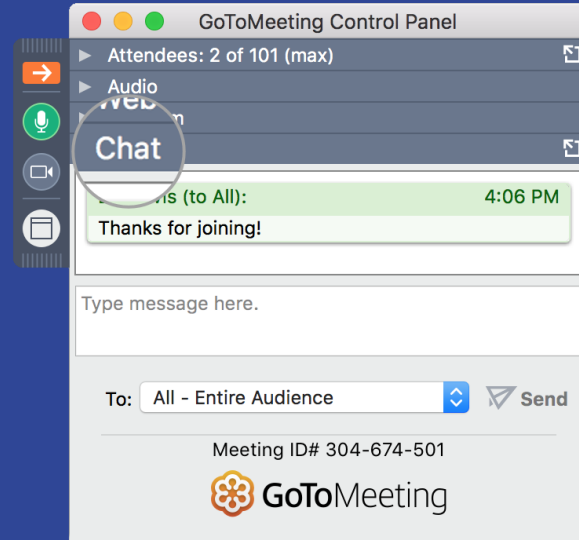
Q & A



**WORLDWIDE REACH.
HUMAN TOUCH.**

QUESTIONS

- All participants are in “listen only” mode
- Please submit your questions via the ‘chat box’ on the right hand side of the control panel



SPEAKERS



Dr Yuchia Tsai

Medical Director – Africa



Anneline

Booyse-Mofokeng

Security Director - Africa



Christelle Larkins

Account Manager
Southern Africa



**WORLDWIDE REACH.
HUMAN TOUCH.**

REFLECTION

- First alert on COVID-19 went out on 31 December 2019.
- Global confirmed cases
- Africa confirmed cases
- We have logged over 23K COVID-19 cases for our clients.
- Ranging from mining industries, oil and gas industries, food and clothing retailers, financial services providers, high tech and pharmaceuticals amongst others
- Spanning across the whole African continent

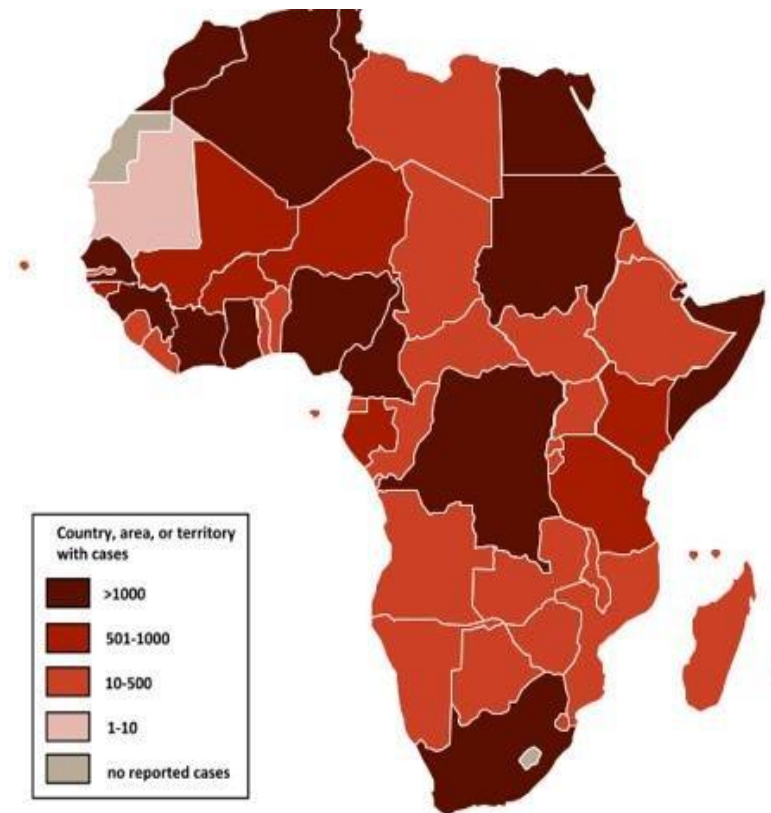


AFRICA'S RESPONSE

Economic and
societal impact

Complete and
partial lockdowns

Wider systems
impact



PSYCHOLOGICAL STRESSORS

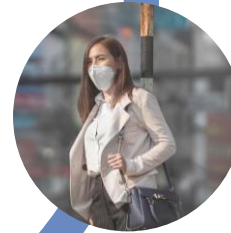
SOCIAL-
POLITICAL
INSTABILITY



UNCERTAINTY



HEALTH THREATS
LOSS OF FAMILY
AND FRIENDS



WORK FROM HOME
FAMILY RESPONSIBILITIES

How Does
BUSINESS
HELP THE
SOCIETY



MAJOR CHANGES
IN LIFE AND WORK

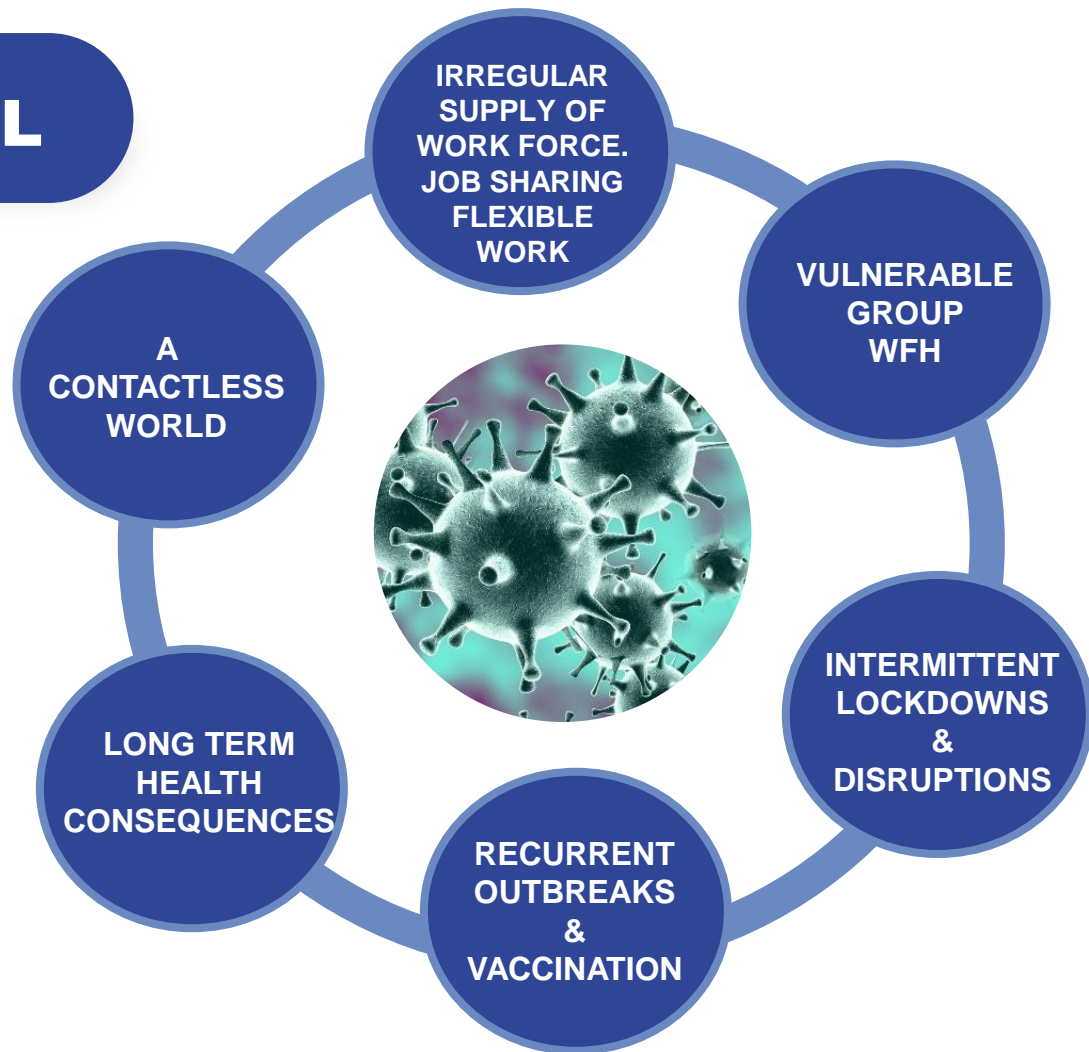


INFORMATION OVERLOAD



WORLDWIDE REACH.
HUMAN TOUCH.

THE NEW NORMAL



 WORLDWIDE REACH.
HUMAN TOUCH.

WHAT BUSINESSES SHOULD BE ASKING

- ? How can we safely resume operations?
- ? Which employees are more at risk than others?
- ? How should we be testing for COVID-19?
- ? How should we adapt the workplace?
- ? How can we manage COVID-19 cases in the workplace?
- ? How can we inform and engage with our employees?



THE MOST AGILE COMPANIES



Repurpose ➡ **Reskill** ➡ **Reengage** ➡ **Reallocate**

**FLEXIBLE AND
ADAPTIVE**

**USE SCENARIOS
TO GUIDE
DECISIONS**

**ACCELERATED
DIGITIZATION**

**USE ACCURATE
HEALTH
INTELLIGENCE**

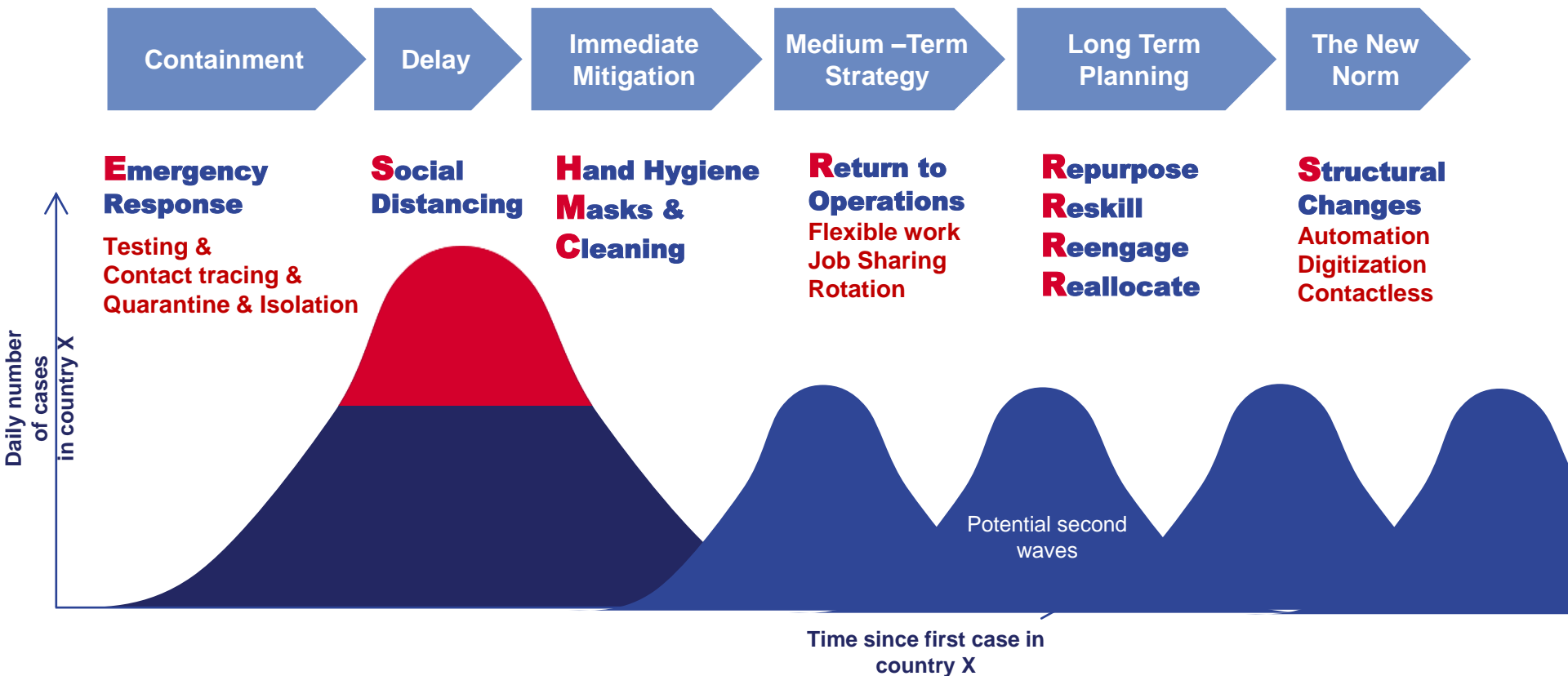
**SEEK EXPERT
MEDICAL
INSIGHTS**

**PLAN FOR
RECOVERY
& RETURN TO
OPERATIONS**

THE PANDEMIC EVOLUTION



Vaccine



SECURITY RISKS

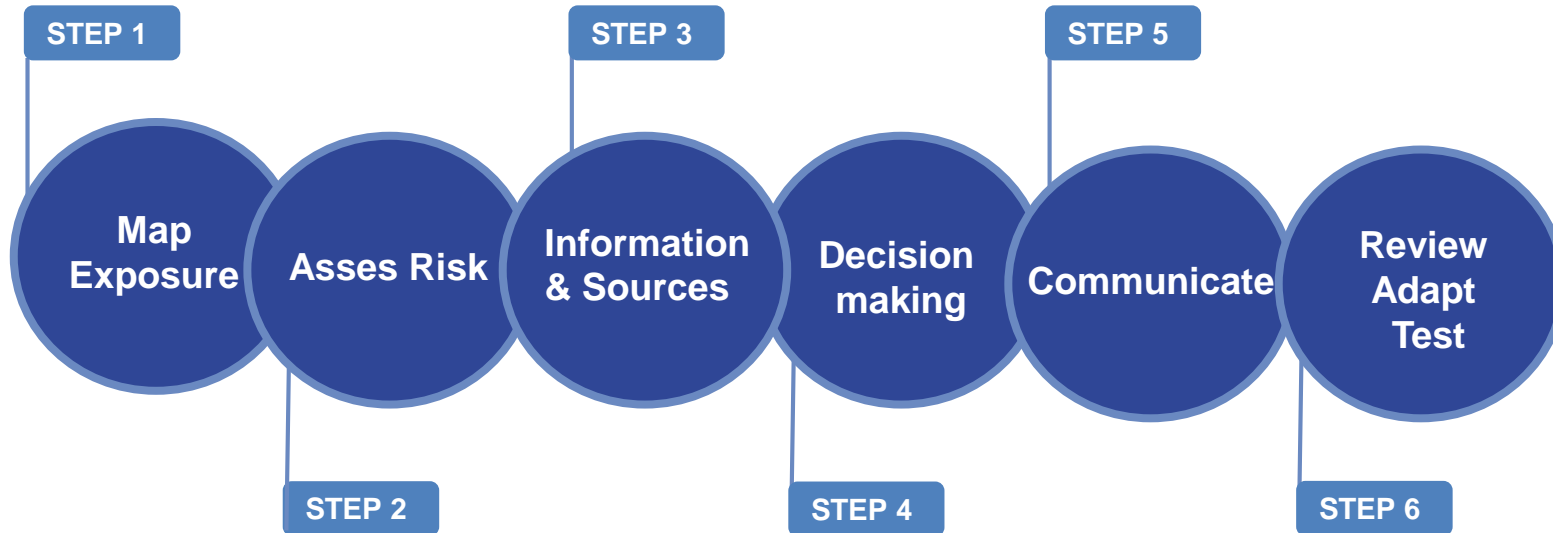
Layers of impact from a crisis



- Political instability per country
 - Security Infrastructure
 - Resources
 - Food insecurity
 - Social unrest & violence
 - Police & military intervention
 - Curfews and measures
 - Elections
- Regional social and political instability
 - Related to travel restrictions and containment measures
 - Protest activity
 - Xenophobia/ targeted violence
 - Crime
 - Opportunistic attacks by militant groups
- Global economy
 - Geopolitical implications / shifts
 - Oil price shock
 - Rising social discontent
 - Covid-19 and future security implications

IMPROVE WORKFORCE RESILIENCE

SECURITY CONSIDERATIONS



RETURN TO MOBILITY

WHAT IS THE OUTLOOK?



DOMESTIC TRAVEL

Easing of restrictions likely in the coming months

INTERNATIONAL TRAVEL

Will be much slower to resume

CONSIDERATIONS

- Government restrictions of both country of origin & destination
- Travel requirements and policy

PREPARATION



To prepare your operations to return, there are many questions to answer, but three critical areas can lead to a successful return to operations plan.

1

**Tracking COVID-19
wherever you operate.**

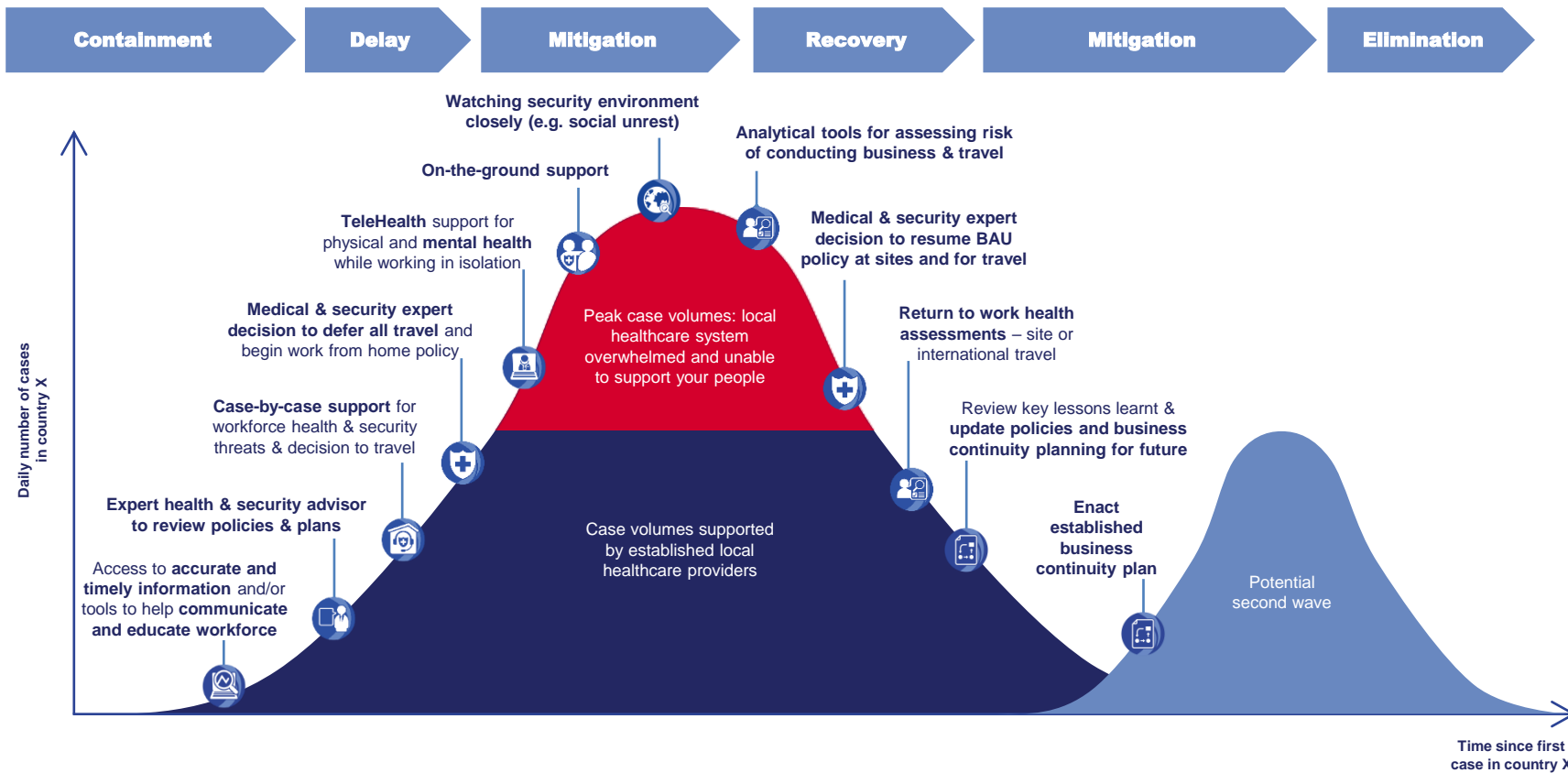
2

**Return to Operations plan
that is up to date as
information continually
changes.**

3

**Expertise and support
to implement and
respond.**

COMBATTING THE PANDEMIC CURVE



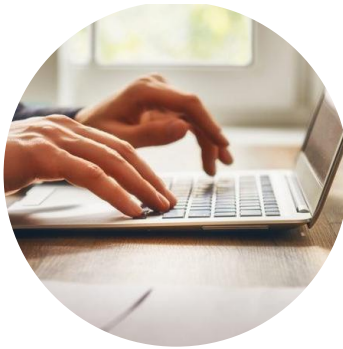
RECOVERY AND SUSTAINABILITY IN THE 'NEW NORMAL'



Whether you are preparing for or are amidst the restart of regular activity, we understand that your key priorities are to:



Protect your **people**



Protect your **business**



Comply with **applicable
laws and regulations**



WORLDWIDE REACH.
HUMAN TOUCH.

HOW WE CAN HELP



Our Worksafe solution is designed to assist organisations in the development of sustainable protocols – to aid in safe return to operations and resuming of business activities, and to support long-term organisational continuity.

We provide:

- Medical expertise to review, validate or help you to implement plans to safely return to work and for sustainable business operation
- Senior Health Consultant as an advisor to your organisation

We help you:

- Define most suitable process and protocols for your workplace
- Define resources needed, as well as screening and testing services required.

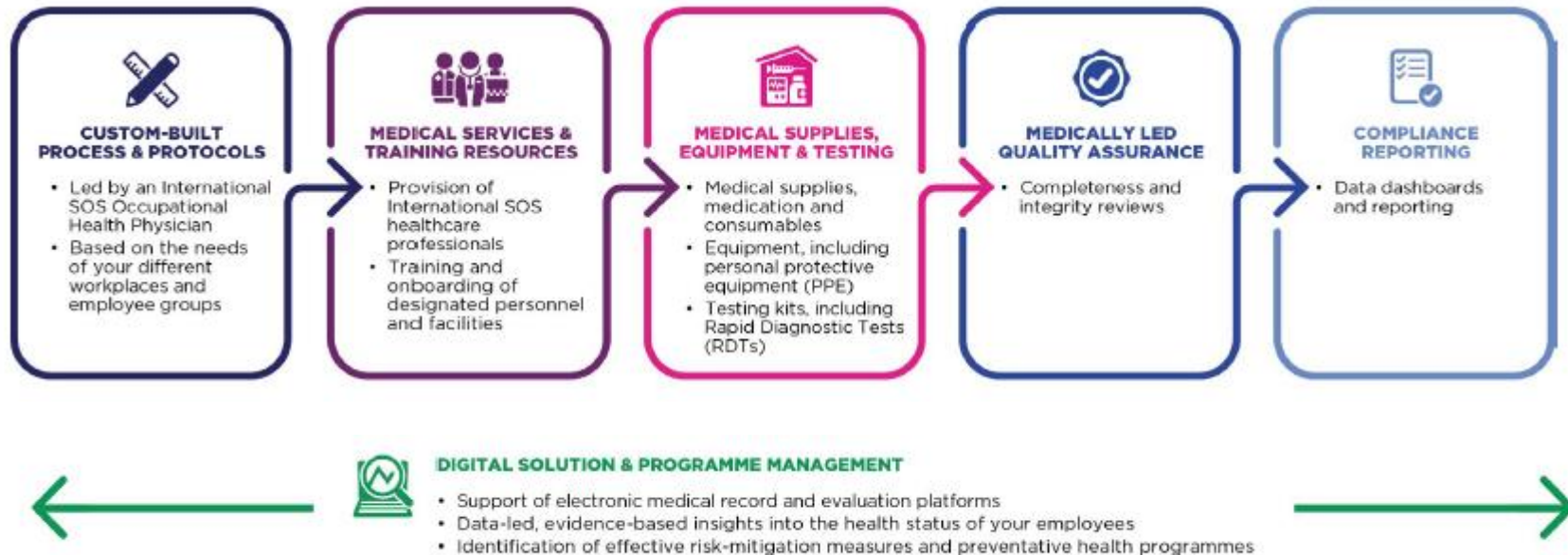


**WORLDWIDE REACH.
HUMAN TOUCH.**

OUR WORKSAFE SOLUTION



Either as an integrated solution, or through a selection of elements most fit for your organisation, obtain **end-to-end medical & security support** ensuring that you receive an International SOS-standard quality of **care for your employees**.





INTRODUCTION

Understand your priorities and requirements

- Present and share the International SOS return-to-operations methodology
- Share high-level observations of your plans



REVISION

Based on your existing plans, or based on the revised plans following the initial meeting -

- Provide written recommendations on the most suitable process and protocols for the workplace and employee group
- Share additional supporting materials where appropriate (operations checklists, etc.)

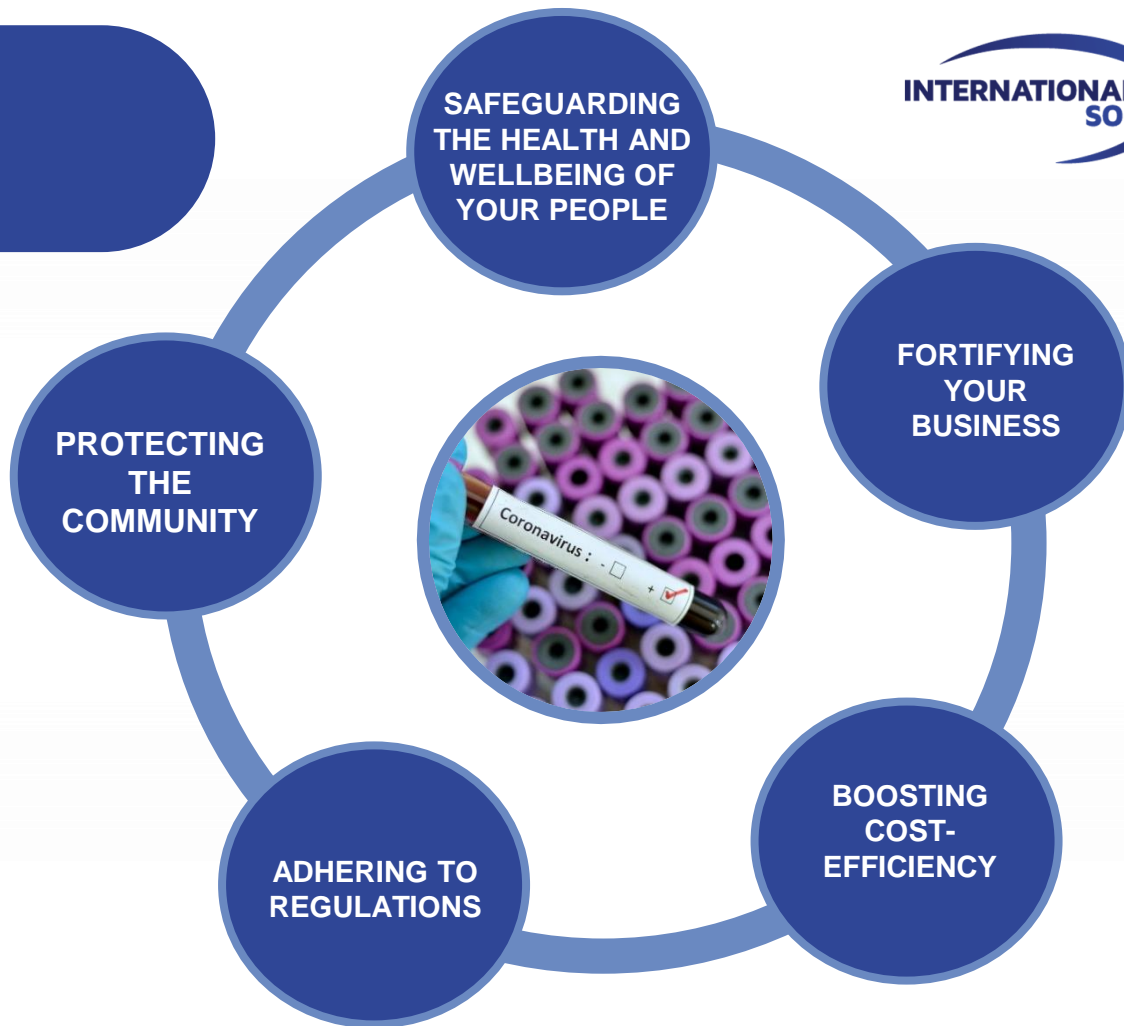


VALIDATION

Review the final version of your plans and to discuss the next steps

- Define the resources needed to deliver medical services at your sites
- Identify and recommend add-on programmes to support employees and management during and after their lockdown periods
- Issue country guidelines / COVID-19 impact ranking tool on return to operations

BENEFITS OF OUR SOLUTIONS



Q&A



**PLEASE COMPLETE OUR BRIEF
FEEDBACK SURVEY AT THE
CLOSURE OF THIS SESSION**

THANK YOU

Communications-Africa@internationalsos.com