

The Koreas: Tensions and the impact on your business

International SOS and Control Risks

7 September 2017

Today's Speakers



Noriko Takasaki
Coordinating Security Manager
International SOS and Control Risks
Asia Pacific



Xavier Carn
VP Security and MedAire
International SOS and Control Risks
EMEA

Today's Agenda

- **The reality of the travel security risks**
- **Identify escalation triggers**
- **Get prepared for any deterioration of the situation – Escalation planning**
- **How organisations are reacting**
- **Questions and Answers**

The reality of the travel security risks

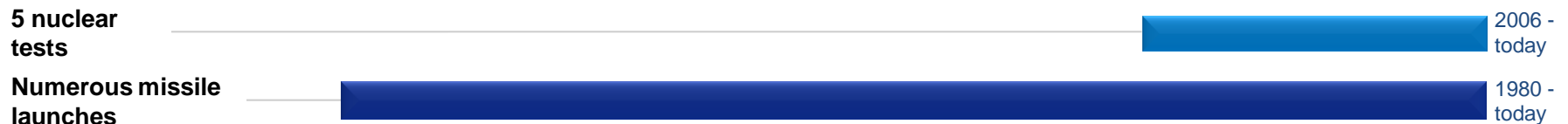
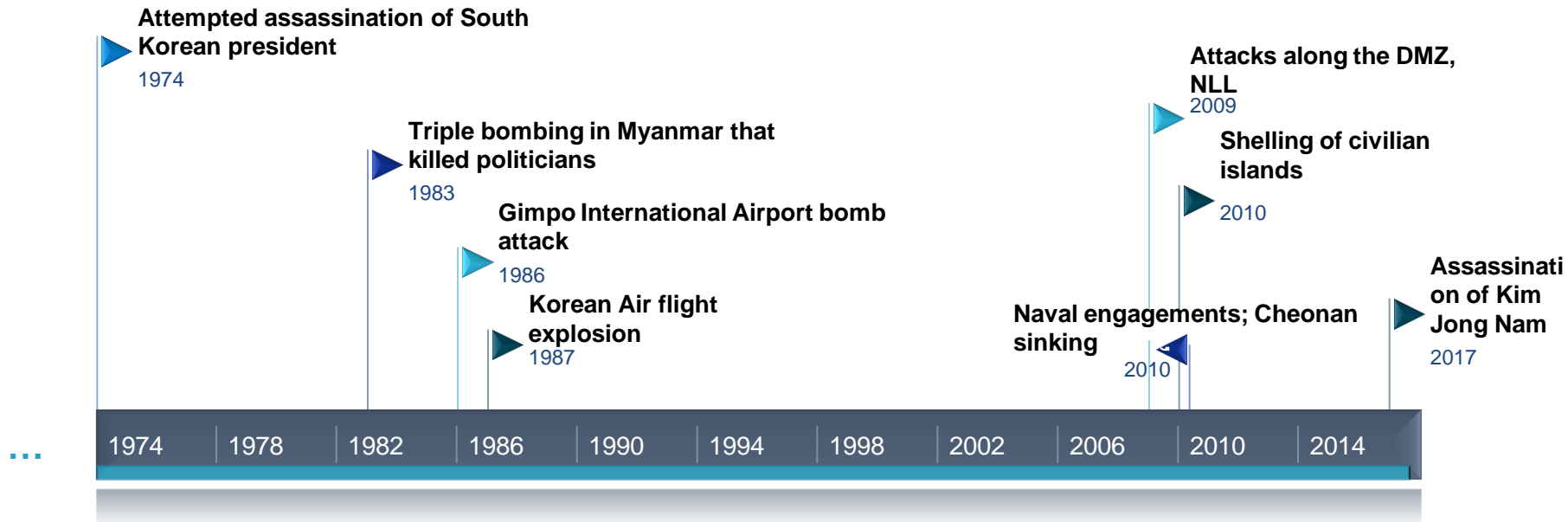
Korean Peninsula - Security overview

INSIGNIFICANT
LOW
MEDIUM
HIGH
EXTREME

Please consult International SOS for the very latest ratings and more detailed information on country-specific risks. Last updated 05 Sep 2017.



Background: Korean peninsula tensions



Recent event – Game changer?

- **4 July:** first ever ICBM test
- **28 July:** North Korea tested an intercontinental ballistic missile (ICBM). The missile appears to be capable of reaching US mainland
- **3 September:** Sixth Nuclear test
- Escalating rhetoric between North Korea and the US president
- **9 August:** North Korea's military was examining plans to strike areas around Guam (US)
- **26 August:** North Korea launched three short-range missiles on into the Sea of Japan (East Sea)
- **29 August:** launched a ballistic missile; it flew over Japan's Hokkaido island



Donald J. Trump
@realDonaldTrump

[Follow](#)

North Korea just stated that it is in the final stages of developing a nuclear weapon capable of reaching parts of the U.S. It won't happen!

3:05 PM - 2 Jan 2017

26,662 Retweets 91,679 Likes



16K

27K



92K



Reactions



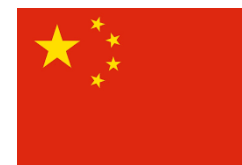
- No change in overall military posture
- Travel Ban to North Korea



- No change in military posture (DEFCON 4)
- Conducted military drills
- Enhance military and missile defense capabilities



- No change in overall military posture
- Discussed evacuation plan for its citizens from South Korea.
- Conducted missile evacuation drills.
- Stated that they would deploy Patriot interceptor missiles, given that NK's missile tests are expected to fly over Japan



- No change in overall military posture
- Issued a ban on North Korean individuals and companies from doing new business in the country
- Increased security along its border with North Korea

Heighten tension in Korean peninsula - Outlook

- **No change in the immediate security situation in South Korea and Japan**
- The **likelihood of war is very low**
- Both North Korea and the US will engage in military brinksmanship, but are **not expected to escalate into a wider confrontation**
- **There is room for miscalculations.**
- The tensions remain, but the US government is **likely to focus primarily on strengthening economic and diplomatic pressure**



Identify escalation triggers

Escalation triggers to monitor

Actions from North Korea

A missile launch that is misfired or **accidentally lands in South Korean, Japanese territory, or Guam**

Missile or artillery fire attack from the North against **mainland South Korea**, resulting in significant casualties.

Missile or artillery fire attack from the North against **mainland South Korea outside the DMZ**, affecting major urban centres

Reactions from other countries

US intercepts a missile test-launch by North Korea

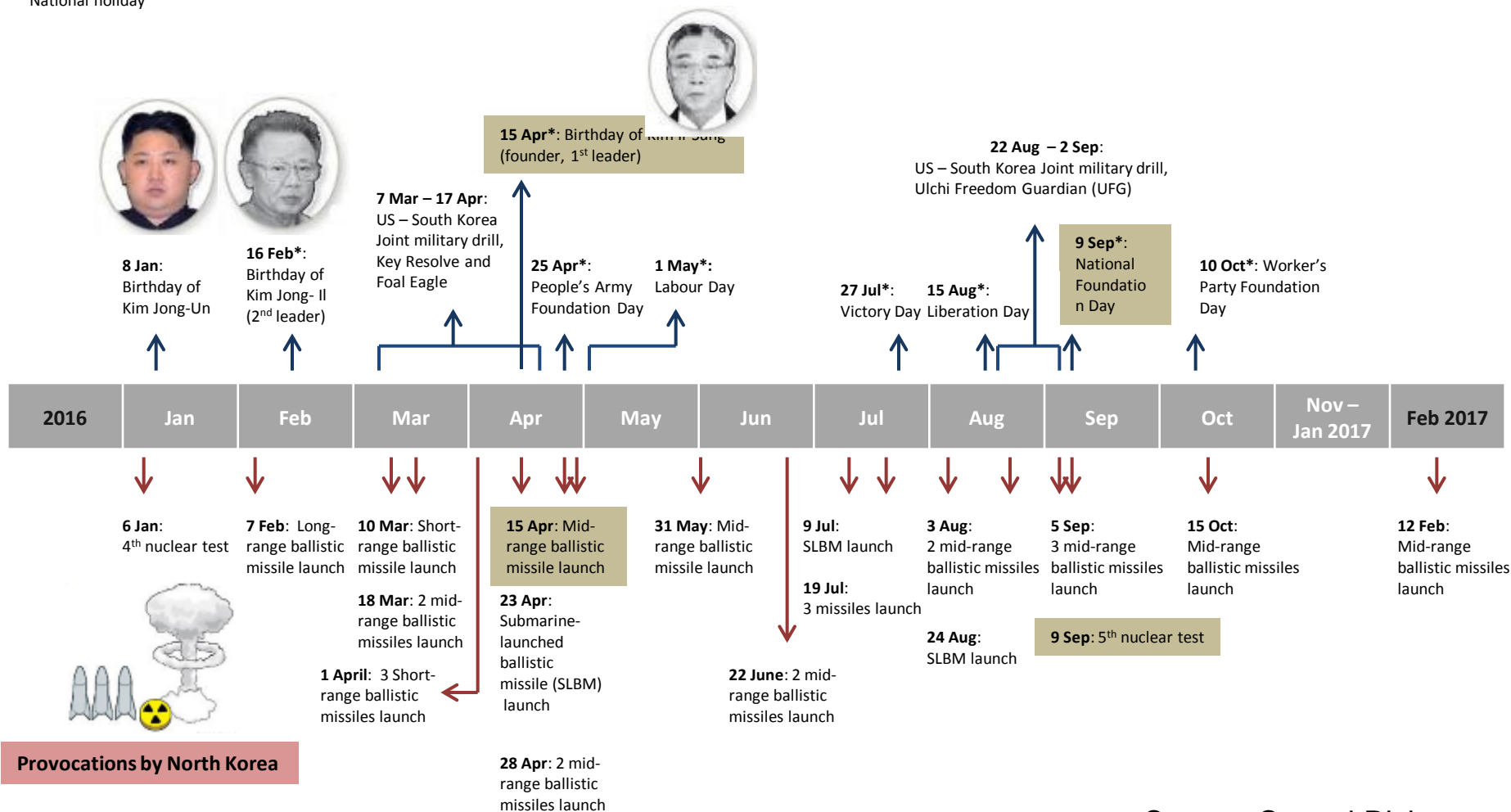
A move by South Korea to increase **military preparedness** from the current DEFCON 4 (the second-lowest level of readiness) to DEFCON 3.

An **increase in the level of warnings and advisories** issued by the governments of South Korea, China, Japan, the US and the UK

Flashpoint Dates

Flashpoint dates

* National holiday



Source: Control Risks

Regional impact - Japan, Guam and the Northern Mariana Islands

- The **security environment** is **inextricably linked** to **tensions** on the Korean peninsula.
- If there is **escalation of tensions** on the Korean peninsula **will result in the evolution of our travel advice** for South Korea.
- **Similar preparedness required**





Get prepared for any deterioration of the situation

Escalation response: a myriad of challenges

External context



- Lack of reliable intelligence
- Sensationalised media reporting
- Panic and rumours
- Embassies and official resources overstrained / unavailable
- Lack of transportation
- Mobile communications affected
- Language barrier
- Major spikes in demand for resources

Internal context



- No contact with employees on the ground
- No situational awareness
- Sympathetic pressures (what are other companies doing?!)
- Decision making lines unclear
- Heavy admin burden
- Internal stakeholder management

Escalation Planning Within Organisations

Corporate

What is the level of preparedness across all our business locations?

How do we support our businesses and what decisions are needed?

How do we keep updated about the situation?

Country Manager

How do I ensure the safety of my employees, who & where are they?

How do I minimise the impact on my business operations?

What are our options and plan of action for evacuation, who is doing what?

Employee

What will my company do to support me and my dependants?

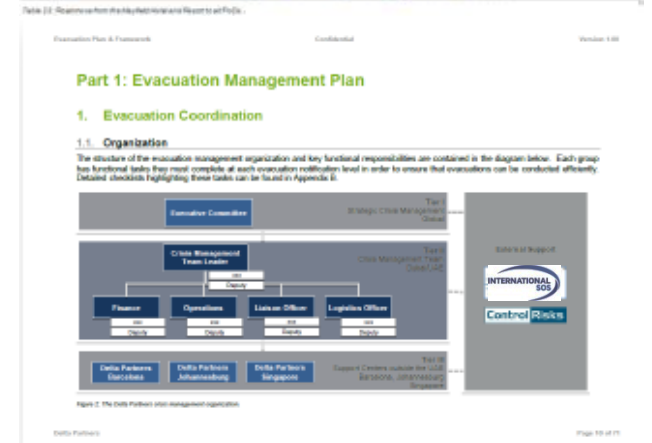
What should I do and what are my responsibilities?

How do I communicate with my company during this situation?

Towards Best Practice

1. What tools are there to protect your workforce?
2. Access to credible, corroborated security information and advice
3. Aide Decision Making – timely, effective and quality
4. Plan needs to be workable - preparation must include crisis management training, rehearsal
5. Clearly defined roles and responsibilities within the organisation
6. Communication - from whom, to whom, channels and messaging

Serial	Feature	Strategy	Key leading indicators	Enabling	Actions	Remarks
1.1	Access to credible, corroborated security information and advice	1.1.1. Establish a secure, reliable, and accessible communication system that can be used in the event of a crisis. This system should be able to reach all personnel, including those in remote locations. 1.1.2. Establish a secure, reliable, and accessible communication system that can be used in the event of a crisis. This system should be able to reach all personnel, including those in remote locations. 1.1.3. Establish a secure, reliable, and accessible communication system that can be used in the event of a crisis. This system should be able to reach all personnel, including those in remote locations.	1.1.1.1. Establish a secure, reliable, and accessible communication system that can be used in the event of a crisis. This system should be able to reach all personnel, including those in remote locations. 1.1.1.2. Establish a secure, reliable, and accessible communication system that can be used in the event of a crisis. This system should be able to reach all personnel, including those in remote locations. 1.1.1.3. Establish a secure, reliable, and accessible communication system that can be used in the event of a crisis. This system should be able to reach all personnel, including those in remote locations.	1.1.1.1. Establish a secure, reliable, and accessible communication system that can be used in the event of a crisis. This system should be able to reach all personnel, including those in remote locations. 1.1.1.2. Establish a secure, reliable, and accessible communication system that can be used in the event of a crisis. This system should be able to reach all personnel, including those in remote locations. 1.1.1.3. Establish a secure, reliable, and accessible communication system that can be used in the event of a crisis. This system should be able to reach all personnel, including those in remote locations.	1.1.1.1. Establish a secure, reliable, and accessible communication system that can be used in the event of a crisis. This system should be able to reach all personnel, including those in remote locations. 1.1.1.2. Establish a secure, reliable, and accessible communication system that can be used in the event of a crisis. This system should be able to reach all personnel, including those in remote locations. 1.1.1.3. Establish a secure, reliable, and accessible communication system that can be used in the event of a crisis. This system should be able to reach all personnel, including those in remote locations.	1.1.1.1. Establish a secure, reliable, and accessible communication system that can be used in the event of a crisis. This system should be able to reach all personnel, including those in remote locations. 1.1.1.2. Establish a secure, reliable, and accessible communication system that can be used in the event of a crisis. This system should be able to reach all personnel, including those in remote locations. 1.1.1.3. Establish a secure, reliable, and accessible communication system that can be used in the event of a crisis. This system should be able to reach all personnel, including those in remote locations.
1.2	Access to credible, corroborated security information and advice	1.2.1. Establish a secure, reliable, and accessible communication system that can be used in the event of a crisis. This system should be able to reach all personnel, including those in remote locations. 1.2.2. Establish a secure, reliable, and accessible communication system that can be used in the event of a crisis. This system should be able to reach all personnel, including those in remote locations. 1.2.3. Establish a secure, reliable, and accessible communication system that can be used in the event of a crisis. This system should be able to reach all personnel, including those in remote locations.	1.2.1.1. Establish a secure, reliable, and accessible communication system that can be used in the event of a crisis. This system should be able to reach all personnel, including those in remote locations. 1.2.1.2. Establish a secure, reliable, and accessible communication system that can be used in the event of a crisis. This system should be able to reach all personnel, including those in remote locations. 1.2.1.3. Establish a secure, reliable, and accessible communication system that can be used in the event of a crisis. This system should be able to reach all personnel, including those in remote locations.	1.2.1.1. Establish a secure, reliable, and accessible communication system that can be used in the event of a crisis. This system should be able to reach all personnel, including those in remote locations. 1.2.1.2. Establish a secure, reliable, and accessible communication system that can be used in the event of a crisis. This system should be able to reach all personnel, including those in remote locations. 1.2.1.3. Establish a secure, reliable, and accessible communication system that can be used in the event of a crisis. This system should be able to reach all personnel, including those in remote locations.	1.2.1.1. Establish a secure, reliable, and accessible communication system that can be used in the event of a crisis. This system should be able to reach all personnel, including those in remote locations. 1.2.1.2. Establish a secure, reliable, and accessible communication system that can be used in the event of a crisis. This system should be able to reach all personnel, including those in remote locations. 1.2.1.3. Establish a secure, reliable, and accessible communication system that can be used in the event of a crisis. This system should be able to reach all personnel, including those in remote locations.	1.2.1.1. Establish a secure, reliable, and accessible communication system that can be used in the event of a crisis. This system should be able to reach all personnel, including those in remote locations. 1.2.1.2. Establish a secure, reliable, and accessible communication system that can be used in the event of a crisis. This system should be able to reach all personnel, including those in remote locations. 1.2.1.3. Establish a secure, reliable, and accessible communication system that can be used in the event of a crisis. This system should be able to reach all personnel, including those in remote locations.



How organisations are reacting

Countermeasures organisations implemented - OSAC study

What countermeasures has your organization implemented?



Source: OSAC - North Korea's Provocations & the Private-sector Response

Questions and Answers
