

TRAVEL RISK OUTLOOK 2020



QUESTIONS & ANSWERS



Participants will be muted throughout.

Please write any question you have in the 'Q&A' box at the top right of your screen, anytime during the presentation.

You will be sent:

- A recording of the webinar
- A copy of the map and research findings



PANELLISTS



DR KATIE GEARY
Medical Director
Special Projects



ROBERT CONDINA
Security Director



JAMES WOOD
Head of Security
Solution

FIVE RESEARCH PILLARS

Travel Risk Management
Council views

Business Resilience
Trends Survey

Country/Region Medical
& Security Risk Ratings

Travel Risk Incident
Case Data

On-the-ground Medical
and Security Intelligence



TEN PREDICTIONS FOR

2020

UPDATED TRAVEL RISK MAP



TRAVEL RISK RESILIENCE MODEL



- Employer's role in Duty of Care provision – incl. bleisure
- Confusion over how to support Millennials & Generation Z
- High profile Duty of Care legal cases
- Start-ups and SMEs under resourced / inexperienced in how to mitigate risk

- Cybercrime / attacks
- Natural disasters, extreme weather
- Infectious diseases

- Geopolitical shifts and civil unrest
- Mental health support demands
- Physical health issues

TEN PREDICTIONS FOR 2020

Prevention

- 1 **Risks borne from geopolitical shifts** will be the most important mobility challenge for businesses in 2020
- 2 **Mental health** issues will increase in importance in 2020
- 3 **Physical health:** organisations will be more proactive in safeguarding physical health in 2020

Protection

- 4 **Cybercrime** is likely to grow and be an increasing risk to security in 2020 physical health in 2020
- 5 **Climate change** will exacerbate the occurrence of environmental disruptions in 2020
- 6 **Infectious disease outbreaks** from established and newly emerging pathogens will increase in 2020 due to multiple factors, including climate change, increasing urbanisation, diminishing vaccination coverage and security instability

Productivity

- 7 **'Bleisure travel':** the debate whether an employer is responsible to cover bleisure as part of employee Duty of Care will amplify in 2020
- 8 **Millennials and Generation Z** entering the workplace with different preferences, expectations and attitudes to risk, will continue to challenge businesses to evolve their risk strategies
- 9 **High profile Duty of Care legal cases** will increase in 2020
- 10 **Start-ups and SMEs** that are under-resourced and inexperienced will struggle to meet Duty of Care obligations in 2020

PREVENTION



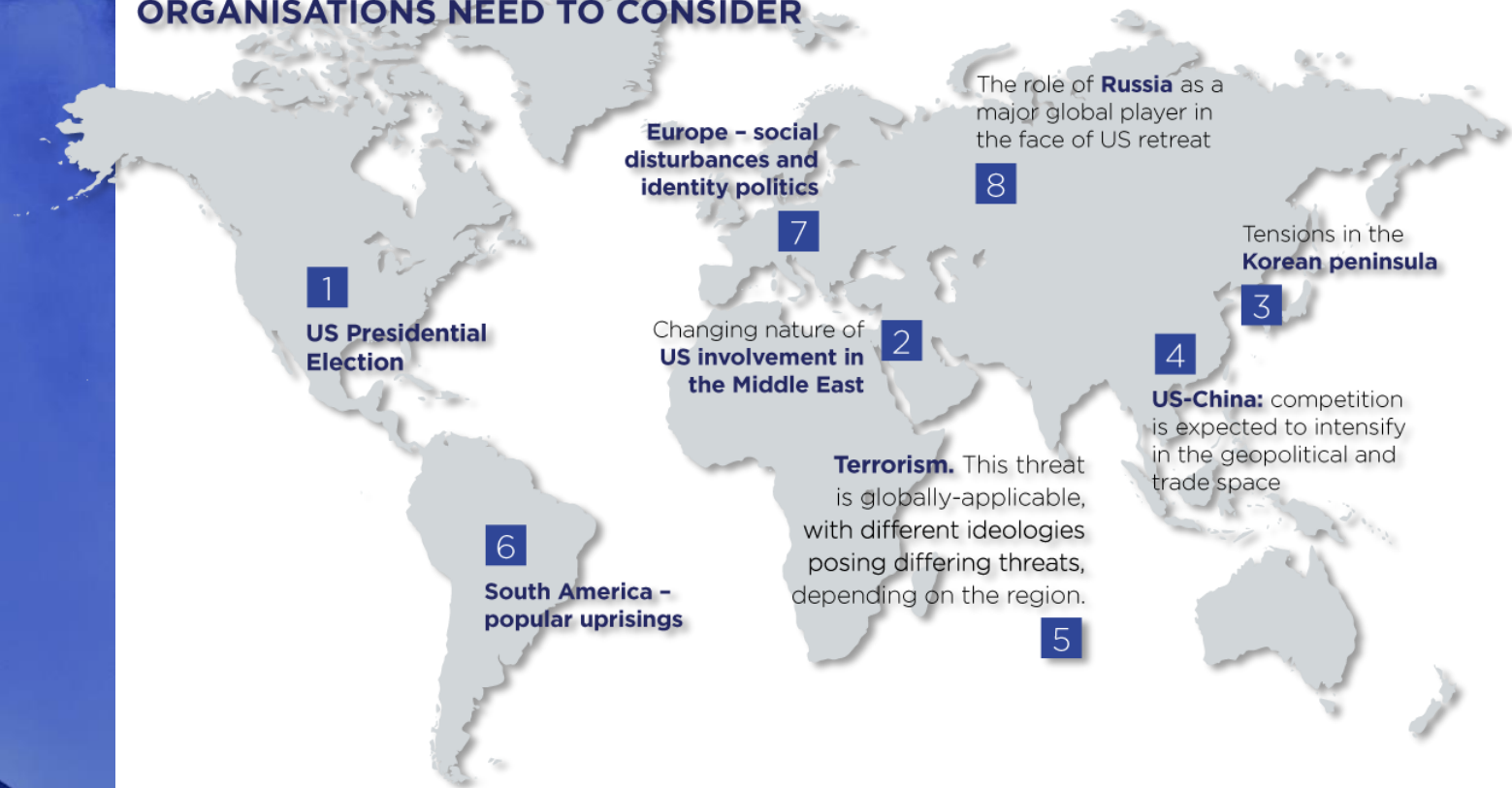
- Geopolitical shifts and civil unrest
- Mental health support demands
- Physical health issues



RISKS BORNE FROM GEOPOLITICAL SHIFTS WILL BE THE MOST IMPORTANT MOBILITY CHALLENGE FOR BUSINESSES IN 2020



GEOPOLITICAL SHIFTS IN 2020 THAT ORGANISATIONS NEED TO CONSIDER





MENTAL HEALTH ISSUES ARE FORECAST TO INCREASE IN IMPORTANCE IN 2020



Yet only 15% of organisations include mental health issues in their travel policies. Of all regions, Americas, Africa & the Middle East are the best performers – with 19% including this.



ORGANISATIONS WILL BE MORE PROACTIVE IN SAFEGUARDING PHYSICAL HEALTH IN 2020



6% Increase in overall case activity. While serious cases were down 8%. A positive sign.

Accidents and injuries, respiratory infections and gastrointestinal conditions were the top three issues travellers faced last year.

12% Increase in malaria cases. Particularly among international assignees, with more cases requiring evacuation.

80% of strokes required evacuation. Strokes and cardiac conditions were the most common serious cases.

PROTECTION



- Cybercrime / attacks
- Natural disasters, extreme weather
- Infectious diseases

CYBERCRIME IS LIKELY TO GROW AND BE AN INCREASING RISK TO SECURITY IN 2020



A graphic showing the percentage "31%" in large white font. The background of the graphic is a dark, blurred image of computer code on a screen, with a red vertical bar on the left side.

Yet less than a third (31%) of organisations include cyber security in their travel policies. Of all regions, Europe is the best performer - with 38% including this.

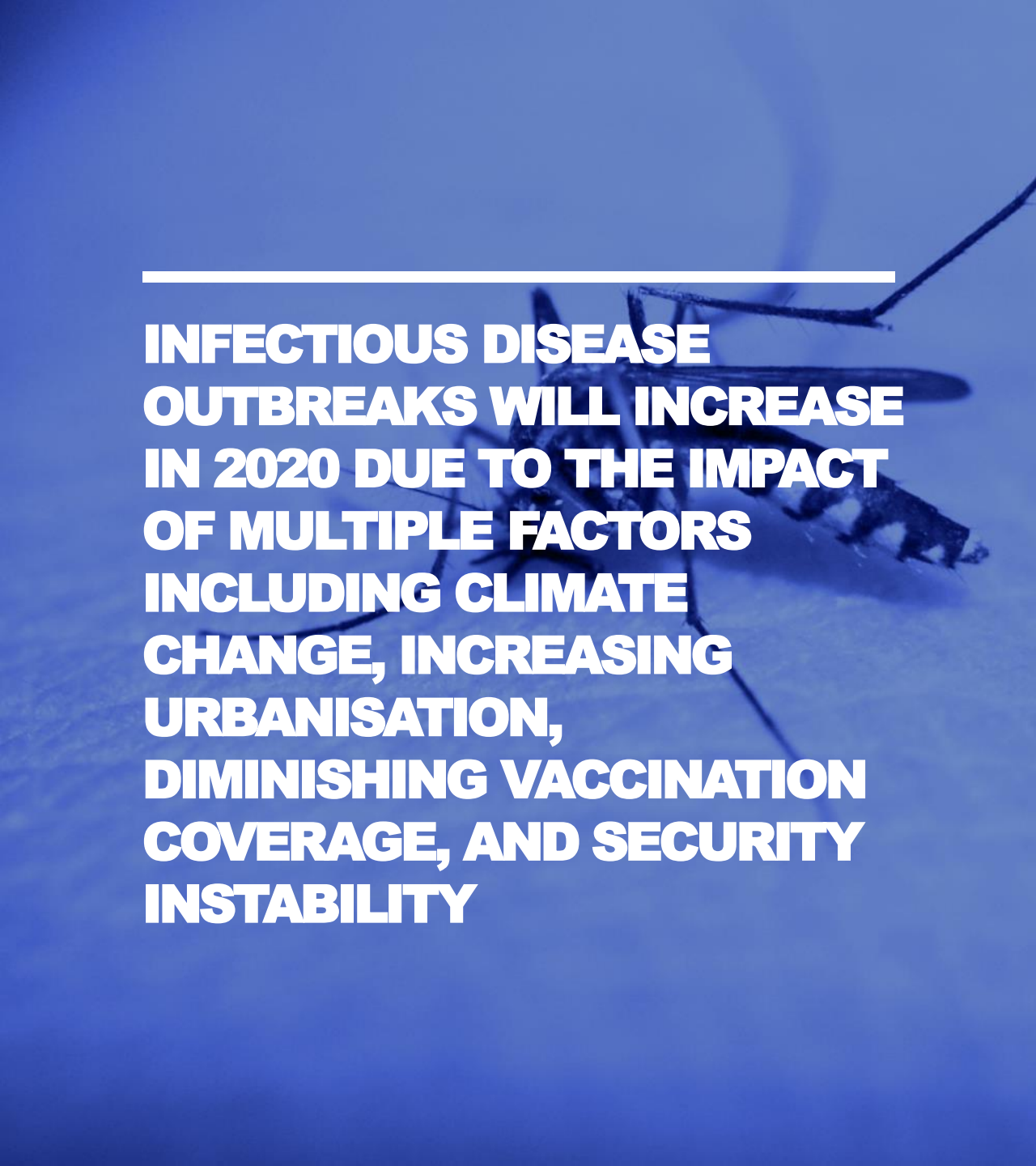
CLIMATE CHANGE WILL EXACERBATE THE OCCURRENCE OF ENVIRONMENTAL DISRUPTIONS IN 2020

51%

Half of organisations (51%) believe that natural disasters will be among the most likely causes of modified itineraries in 2020.

NATURAL DISASTERS AND EXTREME WEATHER EVENTS WHERE INTERNATIONAL SOS SUPPORTED IMPACTED ORGANISATIONS (2017-2019)





**INFECTIOUS DISEASE
OUTBREAKS WILL INCREASE
IN 2020 DUE TO THE IMPACT
OF MULTIPLE FACTORS
INCLUDING CLIMATE
CHANGE, INCREASING
URBANISATION,
DIMINISHING VACCINATION
COVERAGE, AND SECURITY
INSTABILITY**



“ You’ve got climate change, leading to the expansion of vector-borne diseases... malaria and dengue coming into the US now and spreading into ranges where it hasn’t been for hundreds of years. ”

Travel Risk Management Council

PRODUCTIVITY



- Employer's role in Duty of Care provision – incl. bleisure
- Confusion over how to support Millennials & Generation Z
- High profile Duty of Care legal cases
- Start-ups and SMEs under resourced / inexperienced in how to mitigate risk

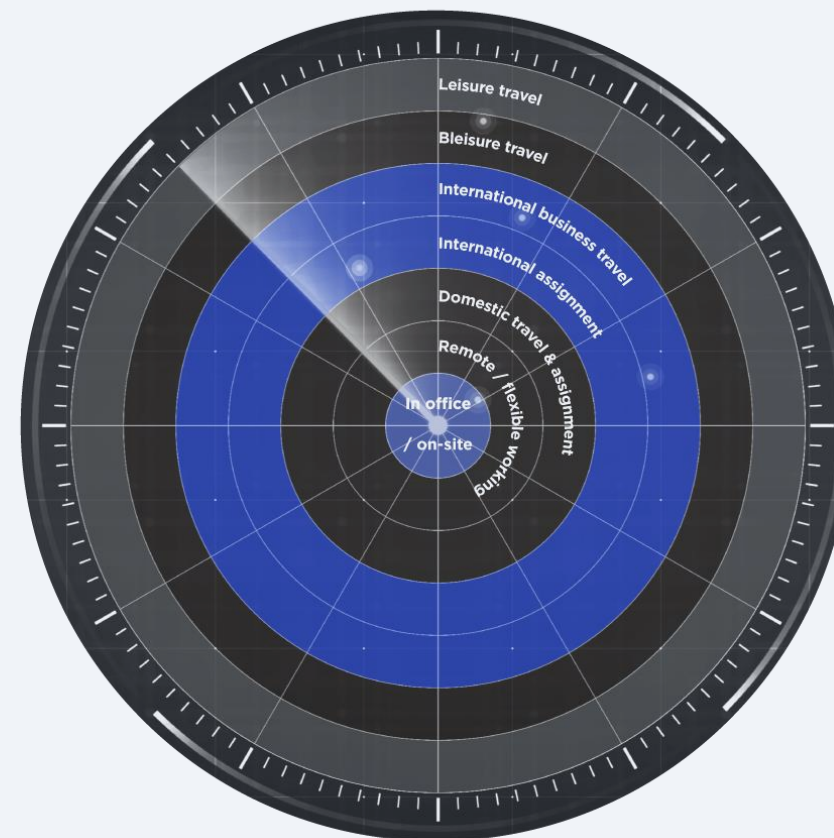
THE DEBATE WHETHER AN EMPLOYER IS RESPONSIBLE TO COVER 'BLEISURE TRAVEL' AS PART OF EMPLOYEE DUTY OF CARE WILL AMPLIFY IN 2020

22%

Yet 22% of organisations include 'bleisure travel' in their travel policies. Compared to other regions, Europe is the best performer for including this (27%).

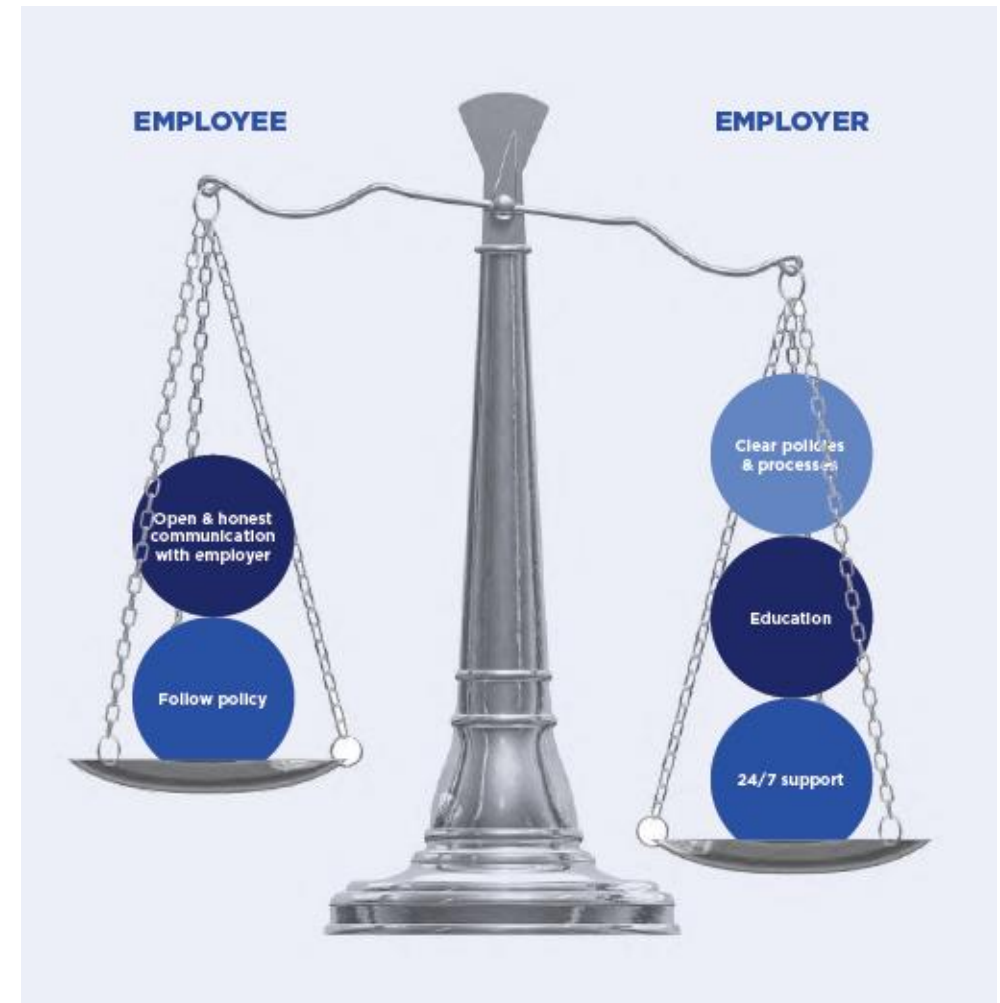


The Duty of Care 'Grey Zones'



- Employee traditionally covered by organisation's travel risk management policy and procedures
- Employee working but Employer's Duty of Care in location is in question
- Employee not working - but Employer's Duty of Care is in question

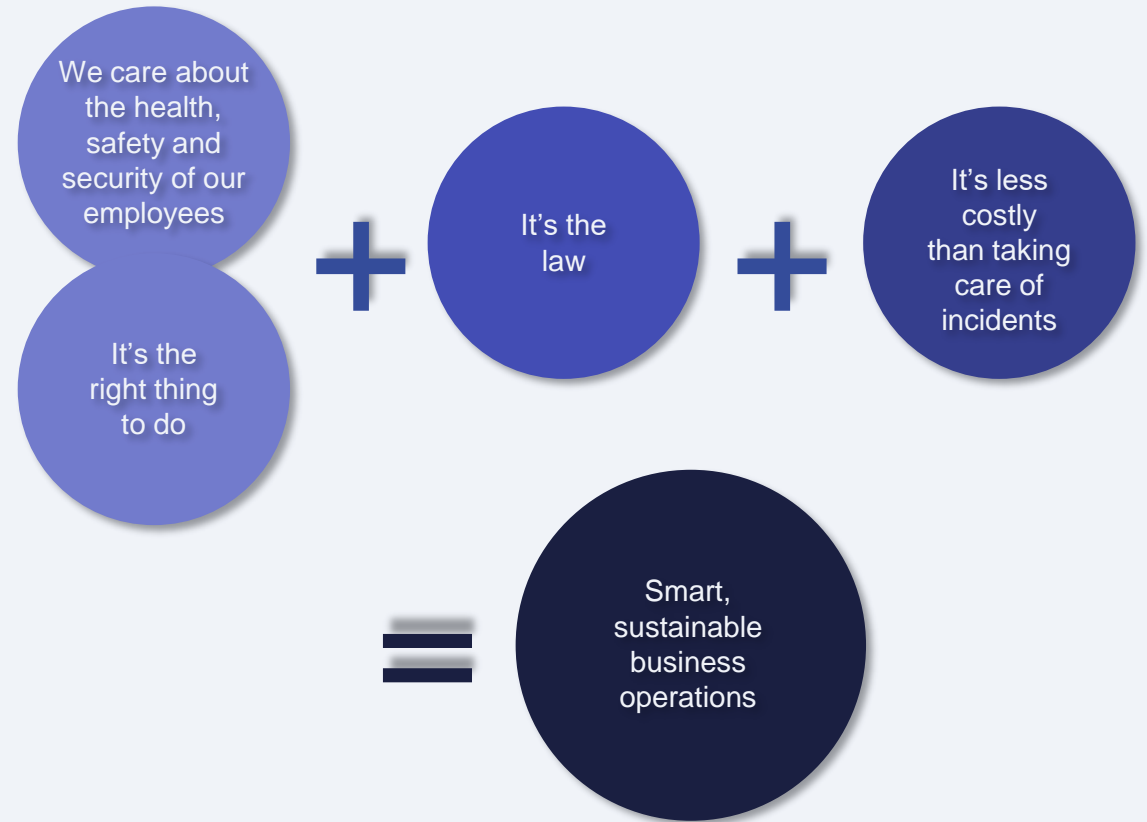
**MILLENNIALS AND
GENERATION Z ENTERING
THE WORKPLACE WITH
DIFFERENT PREFERENCES,
EXPECTATIONS AND
ATTITUDES TO RISK, WILL
CONTINUE TO CHALLENGE
BUSINESSES TO EVOLVE
THEIR RISK STRATEGIES**



HIGH PROFILE DUTY OF CARE LEGAL CASES WILL INCREASE IN 2020



START-UPS AND SMES THAT ARE UNDER-RESOURCED AND INEXPERIENCED WILL STRUGGLE TO MEET DUTY OF CARE OBLIGATIONS IN 2020



TEN PREDICTIONS FOR 2020

Prevention

- 1 **Risks borne from geopolitical shifts** will be the most important mobility challenge for businesses in 2020
- 2 **Mental health** issues will increase in importance in 2020
- 3 **Physical health:** organisations will be more proactive in safeguarding physical health in 2020

Protection

- 4 **Cybercrime** is likely to grow and be an increasing risk to security in 2020 physical health in 2020
- 5 **Climate change** will exacerbate the occurrence of environmental disruptions in 2020
- 6 **Infectious disease outbreaks** from established and newly emerging pathogens will increase in 2020 due to multiple factors, including climate change, increasing urbanisation, diminishing vaccination coverage and security instability

Productivity

- 7 **'Bleisure travel':** the debate whether an employer is responsible to cover bleisure as part of employee Duty of Care will amplify in 2020
- 8 **Millennials and Generation Z** entering the workplace with different preferences, expectations and attitudes to risk, will continue to challenge businesses to evolve their risk strategies
- 9 **High profile Duty of Care legal cases** will increase in 2020
- 10 **Start-ups and SMEs** that are under-resourced and inexperienced will struggle to meet Duty of Care obligations in 2020

ANNUAL CONFERENCE SERIES 2020

This webinar was interesting? **Go a step further** and **gain more practical insights** by joining us during our live conferences.

Again this year, we will host events in different European cities:

DARMSTADT

ANTWERP

FRANKFURT

BONN

STOCKHOLM

GENEVA

LONDON

MILAN

MUNICH

HELSINKI

PARIS

COPENHAGEN

VIENNA

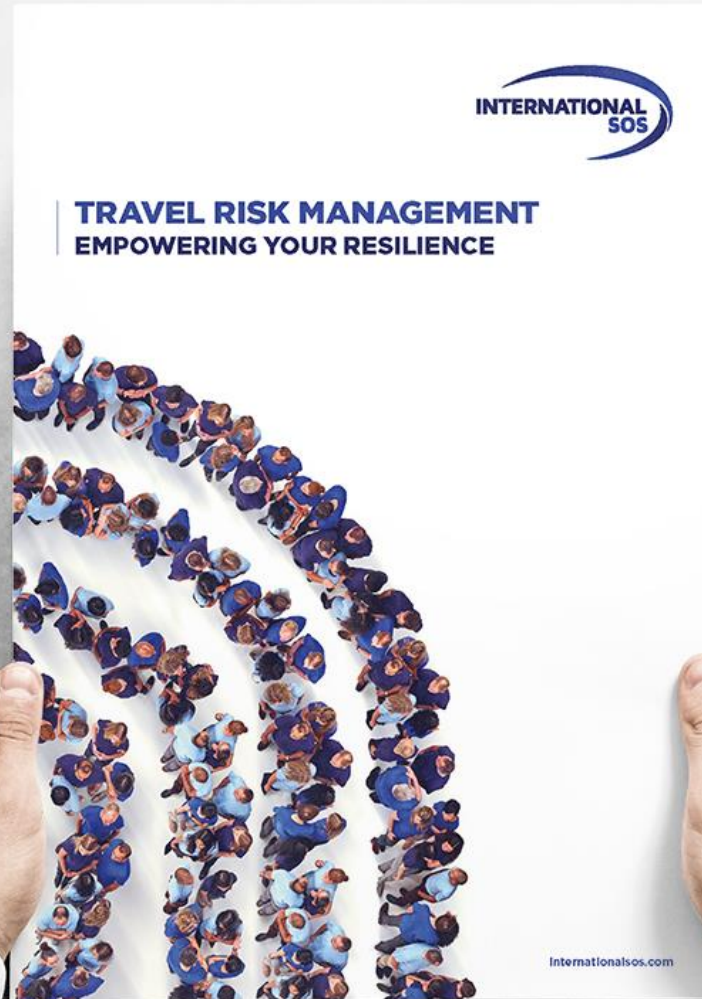
ZURICH

REGISTER

internationalsos.com/client-events

CONTACT US

internationalsos.com/trm or at communications.europe@internationalsos.com



**PLEASE COMPLETE THE
FEEDBACK QUESTIONNAIRE.**

**YOU WILL FIND IN THE
FOLLOW-UP EMAIL:**

- Presentation
- Recording
- Research Report
- Travel Risk Map 2020