

# TRAVEL RISK OUTLOOK 2020





# QUESTIONS & PRESENTATION



Participants will be muted throughout.

Please write any questions you have in the 'questions' box anytime during the presentation. We will answer as many questions as we can at the end.

You will be sent:

- A set of the slides
- A recording of the webinar



# AGENDA

- Research and framework introduction
- 10 predictions for 2020
- Panel discussion
- Audience Q&A





# TRAVEL RISK OUTLOOK 2020





# UPDATED TRAVEL RISK MAP



## **FIVE RESEARCH PILLARS**

Travel Risk Management  
Council views

Business Resilience  
Trends Survey

Country/Region Medical  
& Security Risk Ratings

Travel Risk Incident  
Case Data

On-the-ground Medical  
and Security Intelligence



## **TEN PREDICTIONS FOR**

The year '2020' is written in large white outline font. The two zeros are replaced by a pair of black-rimmed glasses, which are part of a larger image of a person's face wearing glasses, serving as a visual metaphor for vision or prediction.



# TRAVEL RISK MANAGEMENT COUNCIL



**MARC BURROWS**  
Head of Global Mobility  
Services  
KPMG



**WILLIAM WITHAM**  
CEO  
Australia-Africa Minerals &  
Energy Group



**PAULENE CHONG**  
HR Manager  
MCC Land (S) PTE Ltd



**WARNER HUDSON**  
CEO  
H & H Health Strategies



**JUDY KUSZEWSKI**  
Chair  
Global Sustainability  
Standards Board (GRI)



**JUKKA TAKALA**  
President  
International Commission on  
Occupational Health (ICOH)



**FRANCK BARON**  
Chairman  
PARIMA



**NICK PAHL**  
CEO  
Society of Medicine

## **FIVE RESEARCH PILLARS**

Travel Risk Management  
Council views

Business Resilience  
Trends Survey

Country/Region Medical  
& Security Risk Ratings

Travel Risk Incident  
Case Data

On-the-ground Medical  
and Security Intelligence



## **TEN PREDICTIONS FOR**

The year '2020' is written in large, white, outlined font. In the background, a person is visible wearing glasses and holding a camera up to their eye, as if taking a photo. The entire image has a blue tint.



# COUNTRY/REGIONAL MEDICAL & SECURITY RISK RATINGS





## **FIVE RESEARCH PILLARS**

Travel Risk Management  
Council views

Business Resilience  
Trends Survey

Country/Region Medical  
& Security Risk Ratings

Travel Risk Incident  
Case Data

On-the-ground Medical  
and Security Intelligence



## **TEN PREDICTIONS FOR**

# 2020

The background of the right half of the slide features a blue-tinted image of a person's face, seen from the nose up, looking through binoculars. The person has dark hair and is wearing glasses. The binoculars are held up to their eyes, and the lenses are visible. The overall tone is professional and focused.



# TRAVEL RISK RESILIENCE MODEL



- Employer's role in Duty of Care provision – incl. bleisure
- Confusion over how to support Millennials & Generation Z
- High profile Duty of Care legal cases
- Start-ups and SMEs under resourced / inexperienced in how to mitigate risk

- Cybercrime / attacks
- Natural disasters, extreme weather
- Infectious diseases

- Geopolitical shifts and civil unrest
- Mental health support demands
- Physical health issues



# PANELLISTS



**JAMES ROBERTSON**  
**Regional Security**  
**Director**



**DR NATALIE YUEN**  
**Deputy Medical**  
**Director**



**LOUISE VOLSEN**  
**Client Services**  
**Director**



# TEN PREDICTIONS FOR 2020

## Prevention

- 1 **Risks borne from geopolitical shifts** will be the most important mobility challenge for businesses in 2020
- 2 **Mental health** issues will increase in importance in 2020
- 3 **Physical health:** organisations will be more proactive in safeguarding physical health in 2020

## Protection

- 4 **Cybercrime** is likely to grow and be an increasing risk to security in 2020 physical health in 2020
- 5 **Climate change** will exacerbate the occurrence of environmental disruptions in 2020
- 6 **Infectious disease outbreaks** from established and newly emerging pathogens will increase in 2020 due to multiple factors, including climate change, increasing urbanisation, diminishing vaccination coverage and security instability

## Productivity

- 7 **'Bleisure travel':** the debate whether an employer is responsible to cover bleisure as part of employee Duty of Care will amplify in 2020
- 8 **Millennials and Generation Z** entering the workplace with different preferences, expectations and attitudes to risk, will continue to challenge businesses to evolve their risk strategies
- 9 **High profile Duty of Care legal cases** will increase in 2020
- 10 **Start-ups and SMEs** that are under-resourced and inexperienced will struggle to meet Duty of Care obligations in 2020



# THE DEBATE WHETHER AN EMPLOYER IS RESPONSIBLE TO COVER 'BLEISURE TRAVEL' AS PART OF EMPLOYEE DUTY OF CARE WILL AMPLIFY IN 2020

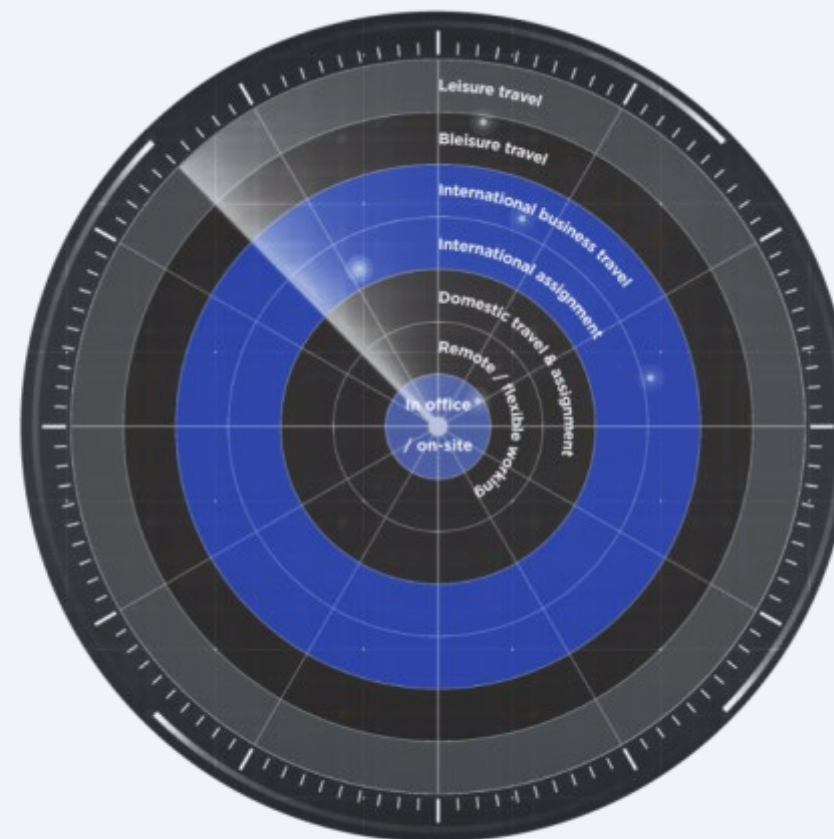


**22%**  
Yet 22% of organisations include 'bleisure travel' in their travel policies.

Compared to other regions, **Asia** is lagging behind: **only 17%** of organisations are including this.



The Duty of Care 'Grey Zones'



- Employee traditionally covered by organisation's travel risk management policy and procedures
- Employee working but Employer's Duty of Care in location is in question
- Employee not working - but Employer's Duty of Care is in question



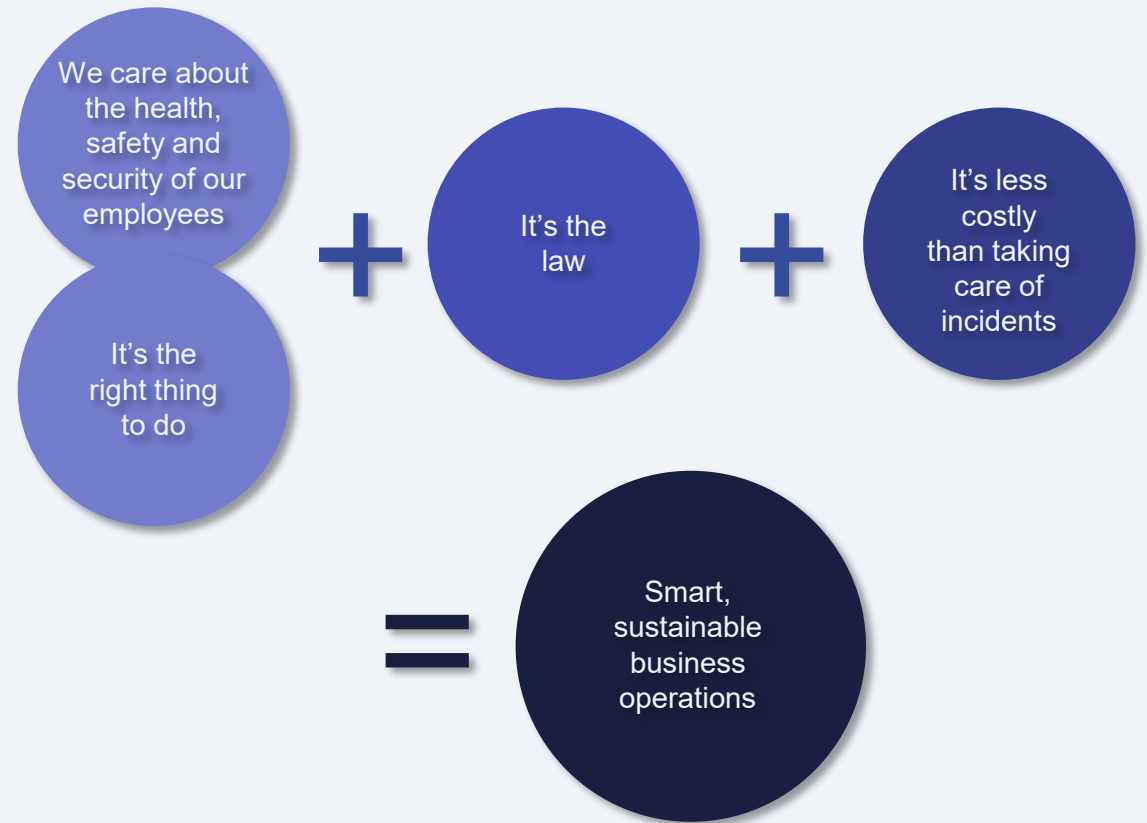
---

**MILLENNIALS AND  
GENERATION Z ENTERING  
THE WORKPLACE WITH  
DIFFERENT PREFERENCES,  
EXPECTATIONS AND  
ATTITUDES TO RISK, WILL  
CONTINUE TO CHALLENGE  
BUSINESSES TO EVOLVE  
THEIR RISK STRATEGIES**





# START-UPS AND SMES THAT ARE UNDER-RESOURCED AND INEXPERIENCED WILL STRUGGLE TO MEET DUTY OF CARE OBLIGATIONS IN 2020





## HIGH PROFILE DUTY OF CARE LEGAL CASES WILL INCREASE IN 2020



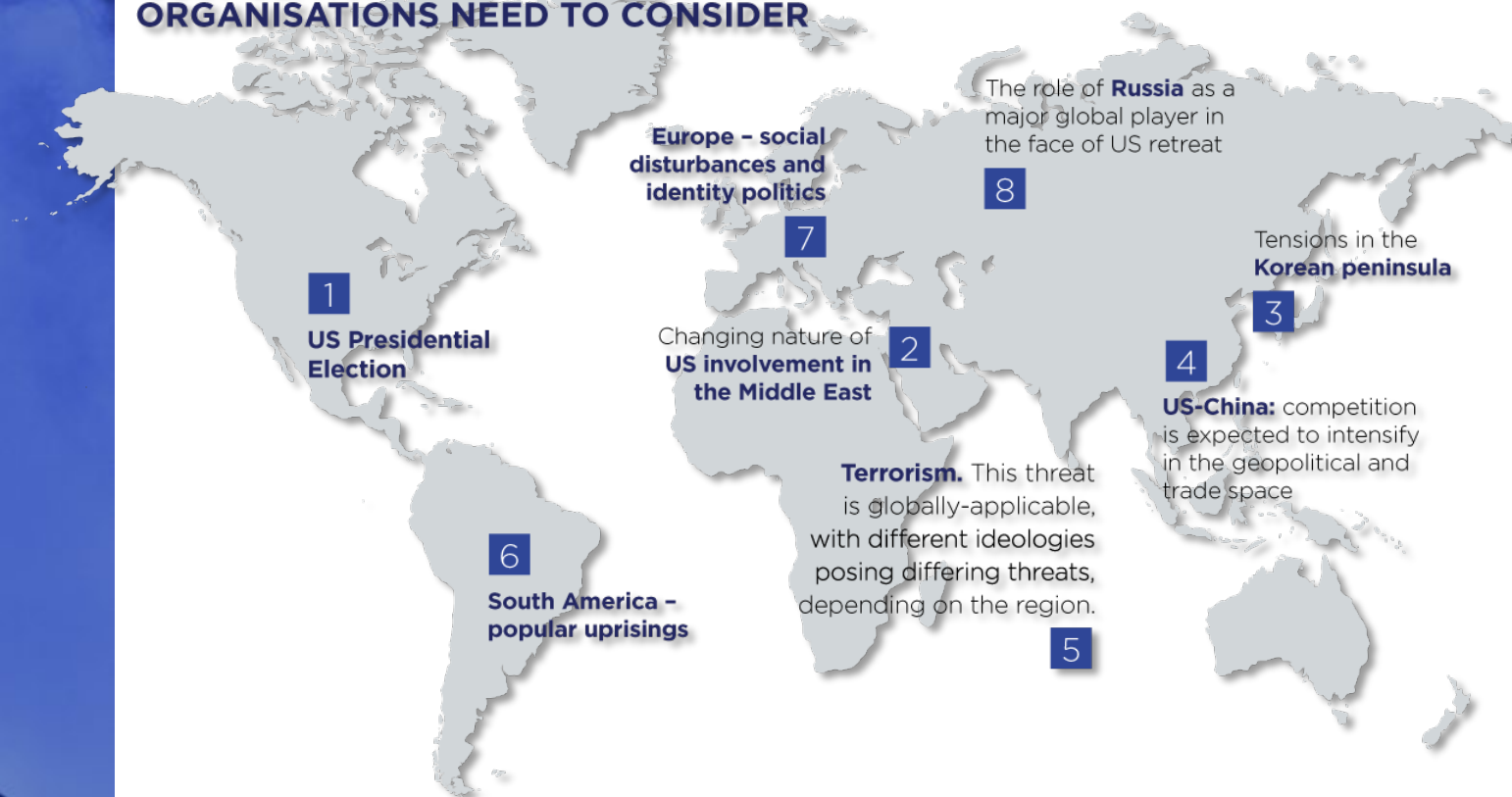




# RISKS BORNE FROM GEOPOLITICAL SHIFTS WILL BE THE MOST IMPORTANT MOBILITY CHALLENGE FOR BUSINESSES IN 2020



## GEOPOLITICAL SHIFTS IN 2020 THAT ORGANISATIONS NEED TO CONSIDER





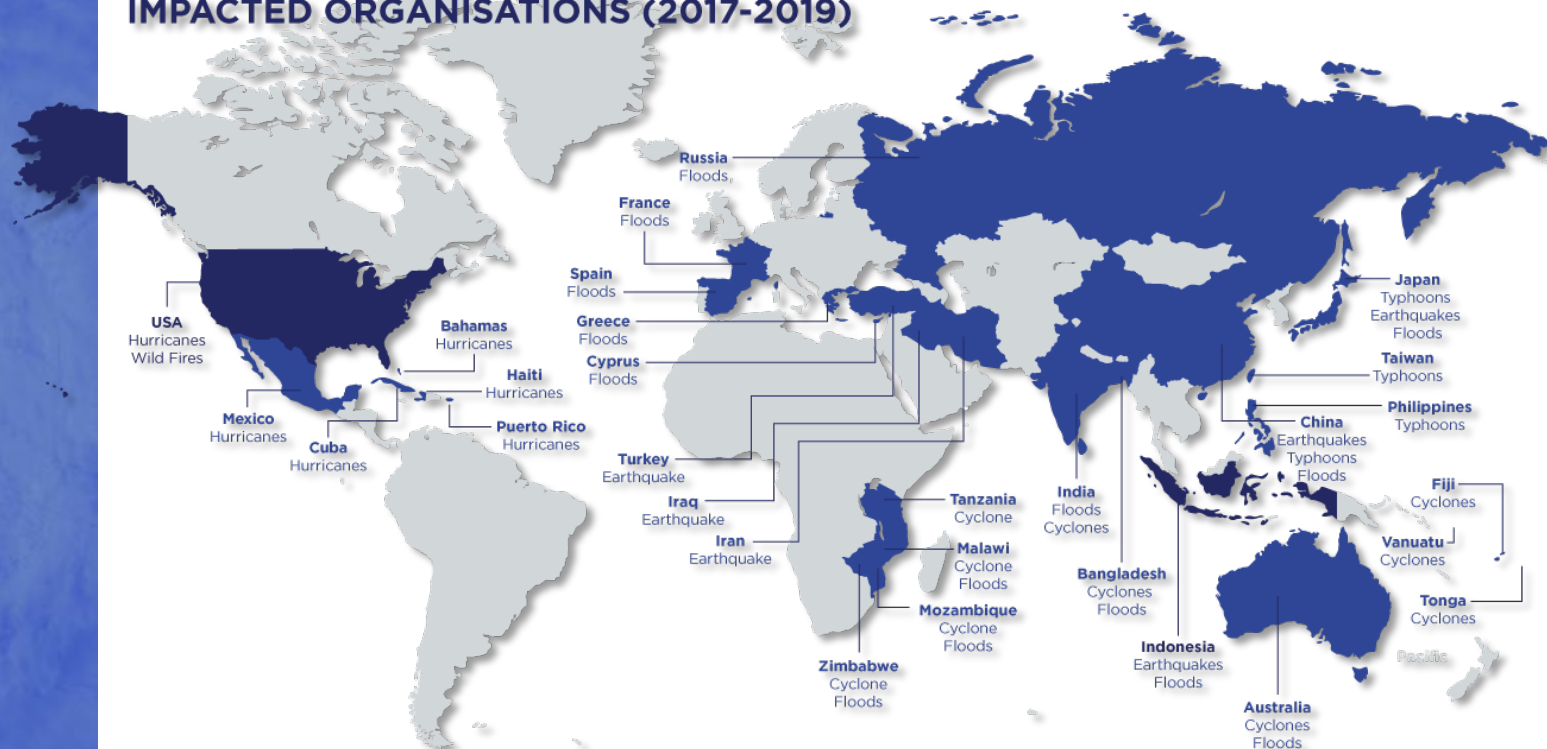
# CLIMATE CHANGE WILL EXACERBATE THE OCCURRENCE OF ENVIRONMENTAL DISRUPTIONS IN 2020

51%

Half of organisations (51%) believe that natural disasters will be among the most likely causes of modified itineraries in 2020.

Higher in **Asia** than the rest of the world (**56%**)

## NATURAL DISASTERS AND EXTREME WEATHER EVENTS WHERE INTERNATIONAL SOS SUPPORTED IMPACTED ORGANISATIONS (2017-2019)





# CYBERCRIME IS LIKELY TO GROW AND BE AN INCREASING RISK TO SECURITY IN 2020



A graphic showing the number "31%" in large white font on a dark red background. The background of the entire slide features a blurred image of computer code.

Yet less than a third (31%) of organisations include cyber security in their travel policies. Of all regions, Europe is the best performer – with 38% including this.

Asia is 10 percentage points below the global average, at just 21%.

A person is sitting alone on the ground in front of a building. The building has a sign with Arabic text 'تلفون: ٥٥٧' (Telephone: 557) on the wall. The scene is dimly lit, suggesting dusk or dawn.

## MENTAL HEALTH ISSUES ARE FORECAST TO INCREASE IN IMPORTANCE IN 2020

A woman with glasses is smiling and looking towards the camera. She is in an office setting with bookshelves in the background.

# 15%

Yet only 15% of organisations include mental health issues in their travel policies. Of all regions, Americas, Africa & the Middle East are the best performers – with 19% including this.





## ORGANISATIONS WILL BE MORE PROACTIVE IN SAFEGUARDING PHYSICAL HEALTH IN 2020

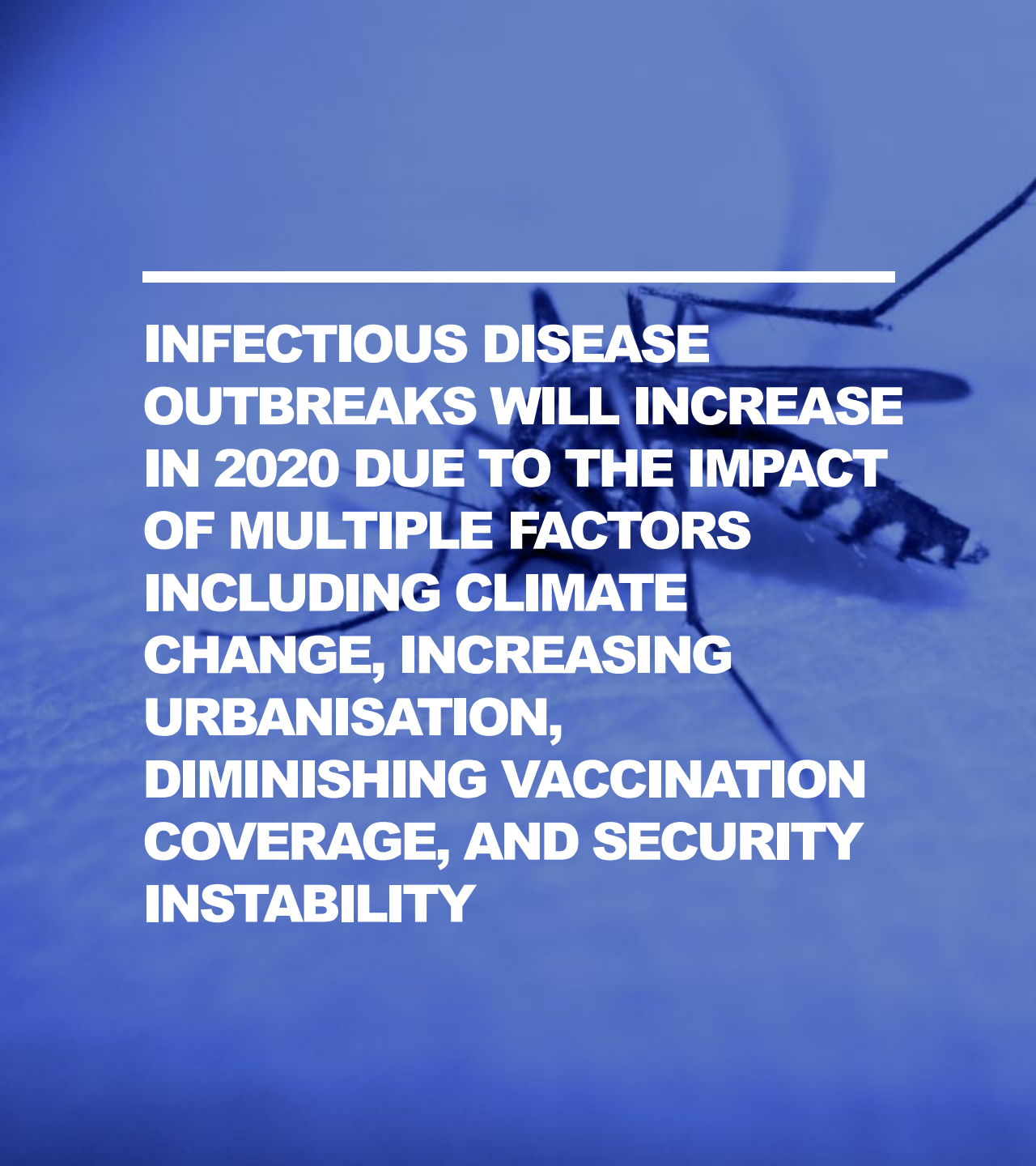


**6%** **Increase in overall case activity.** While serious cases were down 8%. A positive sign.

**Accidents and injuries, respiratory infections and gastrointestinal conditions** were the top three issues travellers faced last year.

**12%** **Increase in malaria cases.** Particularly among international assignees, with more cases requiring evacuation.

**80%** **of strokes required evacuation.** Strokes and cardiac conditions were the most common serious cases.



---

**INFECTIOUS DISEASE  
OUTBREAKS WILL INCREASE  
IN 2020 DUE TO THE IMPACT  
OF MULTIPLE FACTORS  
INCLUDING CLIMATE  
CHANGE, INCREASING  
URBANISATION,  
DIMINISHING VACCINATION  
COVERAGE, AND SECURITY  
INSTABILITY**



**“ You’ve got climate change, leading to the expansion of vector-borne diseases... malaria and dengue coming into the US now and spreading into ranges where it hasn’t been for hundreds of years. ”**

**Travel Risk Management Council**



# TEN PREDICTIONS FOR 2020

## Prevention

- 1 **Risks borne from geopolitical shifts** will be the most important mobility challenge for businesses in 2020
- 2 **Mental health** issues will increase in importance in 2020
- 3 **Physical health:** organisations will be more proactive in safeguarding physical health in 2020

## Protection

- 4 **Cybercrime** is likely to grow and be an increasing risk to security in 2020 physical health in 2020
- 5 **Climate change** will exacerbate the occurrence of environmental disruptions in 2020
- 6 **Infectious disease outbreaks** from established and newly emerging pathogens will increase in 2020 due to multiple factors, including climate change, increasing urbanisation, diminishing vaccination coverage and security instability

## Productivity

- 7 **'Bleisure travel':** the debate whether an employer is responsible to cover bleisure as part of employee Duty of Care will amplify in 2020
- 8 **Millennials and Generation Z** entering the workplace with different preferences, expectations and attitudes to risk, will continue to challenge businesses to evolve their risk strategies
- 9 **High profile Duty of Care legal cases** will increase in 2020
- 10 **Start-ups and SMEs** that are under-resourced and inexperienced will struggle to meet Duty of Care obligations in 2020

# CONTACT US

[internationalsos.com/trm](https://internationalsos.com/trm)

